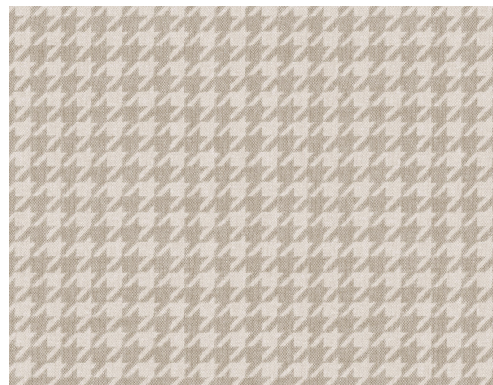


# CARE & MAINTENANCE

---

Collection:	Flamant Caractère
Pattern:	Pied-de-poule
Reference:	12080 • Fantôme
Composition:	Non-woven wallcovering
Description:	The Pied-de-poule pattern revives an evergreen. Everyone recognises this motif; the houndstooth pattern is often found in fashion and in the design world and is a real classic. The pattern is not produced in the over-familiar black and white combination, but in gentle hues of beige and grey.



---

## During installation:



Carefully wipe off any adhesive stains immediately (before the adhesive has dried) with clean water and a soft sponge. Do this after installation of each length.

---

## Maintenance:

First try to apply in an inconspicuous place. Try to remove any stains immediately, before the stain can dry out, by wiping off the surface with clean water and a soft sponge. Only use clear water, no soap.

Dry with a lint-free, clean cloth.

Avoid excessive rubbing of the surface. Avoid excessive soaking of the surface.

Dust can be wiped off with a damp, lint-free, clean cloth or a brush with soft bristles, or can be lightly vacuumed with a soft bristle attachment to avoid damaging the surface.

---

Arte can not be held responsible if damage is caused to the product during the cleaning process.



More info? [Click here](#)



---

ARTE®

wallcoverings for the ultimate in refinement