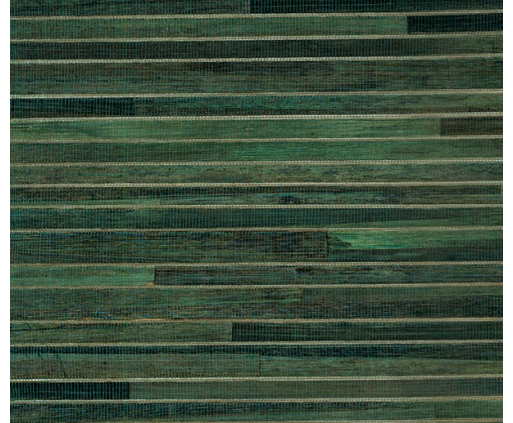


CARE & MAINTENANCE

Collection:	Carabao
Pattern:	Casalian
Reference:	14029 • Evergreen
Composition:	Natural wallcovering on non-woven backing
Description:	This pattern has its roots in one of the most exotic places in the world: the paradise that is the Philippines. One of this country's greatest natural resources is the banana tree, and it is the bark of this tree that is used for this stunning design. The narrow, coloured strips are hand-woven, making each metre of this wallcovering unique.



During installation:



Carefully wipe off any adhesive stains immediately (before the adhesive has dried) with clean water and a soft sponge. Do this after installation of each length.

Maintenance:

First try to apply in an inconspicuous place. Try to remove any stains immediately, before the stain can dry out, by wiping off the surface with clean water and a soft sponge. Only use clear water, no soap.

Dry with a lint-free, clean cloth.

Avoid excessive rubbing of the surface. Avoid excessive soaking of the surface.

Dust can be wiped off with a damp, lint-free, clean cloth or a brush with soft bristles, or can be lightly vacuumed with a soft bristle attachment to avoid damaging the surface.

Arte can not be held responsible if damage is caused to the product during the cleaning process.



More info? [Click here](#)



ARTE®

wallcoverings for the ultimate in refinement