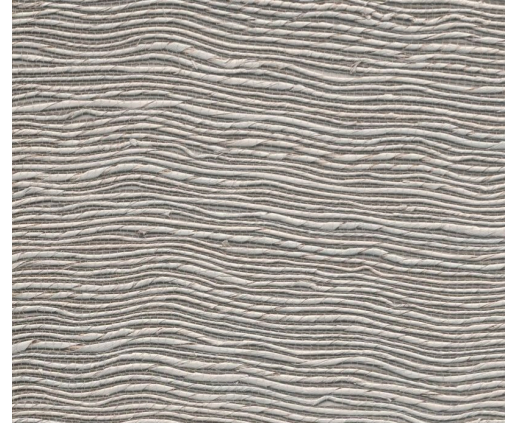


# CARE & MAINTENANCE

---

Collection:	Icarus
Pattern:	Penumbra
Reference:	15740 • Smoke
Composition:	Natural wallcovering on non-woven backing
Description:	This unique wallcovering is made from hand-woven strands of banana bark, which have been meticulously arranged in a wavy pattern using a fine thread. The irregular waves and space between the strands create an interesting, graduated effect, to which this design owes its name: a penumbra is a half-shadow.



---

## During installation:



Carefully dab off any adhesive stains immediately (before the adhesive has dried) with clean water and a soft cloth. Do this after installation of each length.

## Maintenance:

First try to apply in an inconspicuous place. Try to remove any stains immediately, before the stain can dry out, by dabbing off the surface with a moist, lint-free, clean white cloth. Only use clear water, no soap.

Avoid excessive rubbing of the surface. Avoid excessive soaking of the surface.

Dust can be wiped off with a damp, lint-free, clean cloth or a brush with soft bristles, or can be lightly vacuumed with a soft bristle attachment to avoid damaging the surface.

---

Arte can not be held responsible if damage is caused to the product during the cleaning process.



More info? [Click here](#)



ARTE®

wallcoverings for the ultimate in refinement