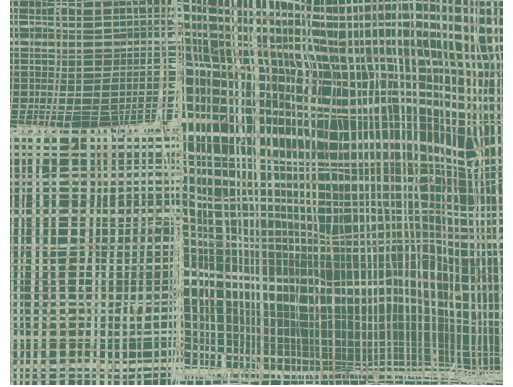


CARE & MAINTENANCE

Collection:	Essentials Totem
Pattern:	Rabane
Reference:	18920 • Malachite
Composition:	Wallpaper on non-woven backing
Description:	In French 'rabane' refers to a fabric made of natural fibres, usually raffia. In this instance, loosely woven strips of raffia have been sewn together to create an informal pattern. The rough raffia texture is finished with a subtle sheen, adding an interesting contrast.



During installation:



Carefully wipe off any adhesive stains immediately (before the adhesive has dried) with clean water and a soft sponge. Do this after installation of each length.

Maintenance:

First try to apply in an inconspicuous place. Try to remove any stains immediately, before the stain can dry out, by wiping off the surface with clean water and a soft sponge. Only use clear water, no soap.

Dry with a lint-free, clean cloth.

Avoid excessive rubbing of the surface. Avoid excessive soaking of the surface.

Dust can be wiped off with a damp, lint-free, clean cloth or a brush with soft bristles, or can be lightly vacuumed with a soft bristle attachment to avoid damaging the surface.

Arte can not be held responsible if damage is caused to the product during the cleaning process.



More info? [Click here](#)



ARTE®

wallcoverings for the ultimate in refinement