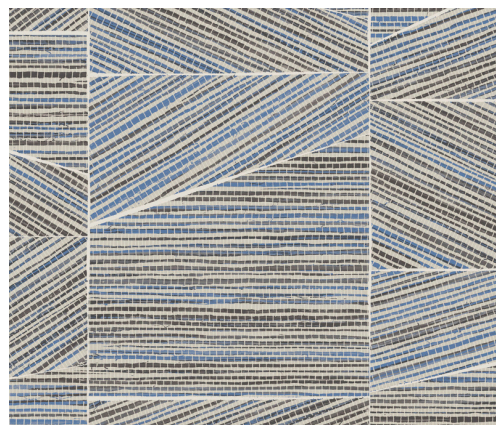


# CARE & MAINTENANCE

---

Collection: Essentials Totem  
Pattern: Infinity  
Reference: 18930 • Ash Blue  
Composition: Wallpaper on non-woven backing  
Description: Neatly stacked geometric shapes are pieced together like a perfect puzzle and yet this design somehow still succeeds in looking as if it has randomly been arranged. The combination of different planes and the rustic woven grass texture contrasts beautifully with the straight lines.



---

## During installation:



Carefully wipe off any adhesive stains immediately (before the adhesive has dried) with clean water and a soft sponge. Do this after installation of each length.

---

## Maintenance:

First try to apply in an inconspicuous place. Try to remove any stains immediately, before the stain can dry out, by whipping off the surface with clean water and a soft sponge. Only use clear water, no soap.

Dry with a lint-free, clean cloth.

Avoid excessive rubbing of the surface. Avoid excessive soaking of the surface.

Dust can be wiped off with a damp, lint-free, clean cloth or a brush with soft bristles, or can be lightly vacuumed with a soft bristle attachment to avoid damaging the surface.

---

Arte can not be held responsible if damage is caused to the product during the cleaning process.



More info? [Click here](#)



---

ARTE®

wallcoverings for the ultimate in refinement