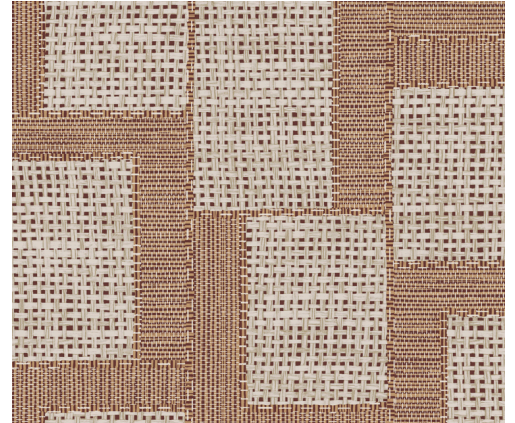


CARE & MAINTENANCE

Collection:	Essentials Totem
Pattern:	Esparto Africano
Reference:	18944 • Tartufo
Composition:	Wallpaper on non-woven backing
Description:	Esparto is a strong fibre made from two species of perennial grasses of North Africa, Spain and Portugal. In woven form it is used for all kinds of crafts, to create both decorative and utilitarian objects. In this instance, it inspired a design in which the rigid shapes contrast beautifully with the randomly organised pattern.



During installation:



Carefully wipe off any adhesive stains immediately (before the adhesive has dried) with clean water and a soft sponge. Do this after installation of each length.

Maintenance:

First try to apply in an inconspicuous place. Try to remove any stains immediately, before the stain can dry out, by whiping off the surface with clean water and a soft sponge. Only use clear water, no soap.

Dry with a lint-free, clean cloth.

Avoid excessive rubbing of the surface. Avoid excessive soaking of the surface.

Dust can be wiped off with a damp, lint-free, clean cloth or a brush with soft bristles, or can be lightly vacuumed with a soft bristle attachment to avoid damaging the surface.

Arte can not be held responsible if damage is caused to the product during the cleaning process.



More info? [Click here](#)



ARTE®

wallcoverings for the ultimate in refinement