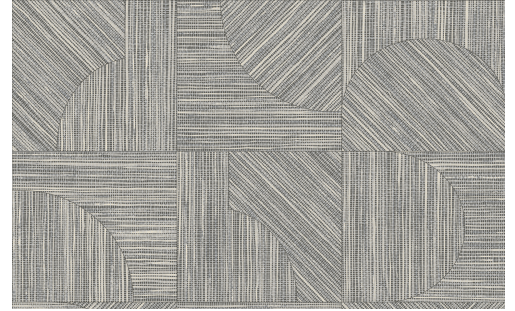


CARE & MAINTENANCE

Collection:	Essentials Tangram
Pattern:	Splice
Reference:	24087 • Fjord
Composition:	Wallpaper on non-woven backing
Description:	Rougher open-weave grasses, cut and inlaid by hand, serve as the inspiration for this design. The irregular pattern of asymmetrical shapes immediately feels very natural.



During installation:



Carefully wipe off any adhesive stains immediately (before the adhesive has dried) with clean water and a soft sponge. Do this after installation of each length.

Maintenance:

First try to apply in an inconspicuous place. Try to remove any stains immediately, before the stain can dry out, by wiping off the surface with clean water and a soft sponge. Only use clear water, no soap.

Dry with a lint-free, clean cloth.

Avoid excessive rubbing of the surface. Avoid excessive soaking of the surface.

Dust can be wiped off with a damp, lint-free, clean cloth or a brush with soft bristles, or can be lightly vacuumed with a soft bristle attachment to avoid damaging the surface.

Arte can not be held responsible if damage is caused to the product during the cleaning process.



More info? [Click here](#)



ARTE®

wallcoverings for the ultimate in refinement