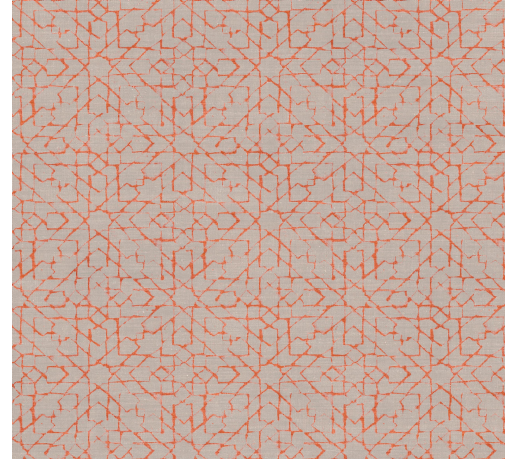


CARE & MAINTENANCE

Collection:	Signature
Pattern:	Spark
Reference:	24560
Composition:	Vinyl wallpaper on paper backing
Description:	Spark has an unusual star pattern. It looks as if ice crystals have crossed each other's path, and have merged, thus creating a brand new pattern. The result is reminiscent of classic mosaics and tile motifs, although with a modern twist. This makes Spark an innovative design that effortlessly fits with any style. Here too, the linen structure creates a calm and gentle end result.



During installation:



Carefully wash off any adhesive stains immediately (before the adhesive has dried) with clean water and a soft sponge. Do this after installation of each length.

Maintenance:

First try to apply in an inconspicuous place. Try to remove any stains immediately, before the stain can dry out, by washing off the surface with clear water and a soft sponge. If needed, a PH-neutral soap solution could be added to the water for more stubborn stains. Always wipe off with warm, clean water.

Never use cleaning agents based on solvents.

Dry with a lint-free, clean cloth.

Dust can be wiped off with a damp, lint-free, clean cloth or a brush with soft bristles, or can be lightly vacuumed with a soft bristle attachment to avoid damaging the surface.

Arte can not be held responsible if damage is caused to the product during the cleaning process.



More info? [Click here](#)



ARTE®

wallcoverings for the ultimate in refinement