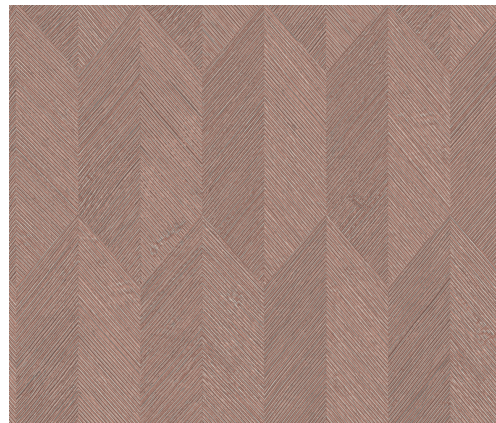


CARE & MAINTENANCE

| | |
|--------------|---|
| Collection: | Monsoon 2.0 |
| Pattern: | Symbol |
| Reference: | 26533A • Vintage Blush |
| Composition: | Vinyl wallpaper on paper backing |
| Description: | Want to try a bit of tribal? Arte can provide a playful and stylish interpretation with the Arrow and Symbol patterns. The parallel and pointed converging lines do more than just create a relief effect, they also create an exotic feel. The pattern is available in a multi-coloured pattern (Arrow) and a monochrome alternative (Symbol). |



During installation:



Carefully wash off any adhesive stains immediately (before the adhesive has dried) with clean water and a soft sponge. Do this after installation of each length.

Maintenance:

First try to apply in an inconspicuous place. Try to remove any stains immediately, before the stain can dry out, by washing off the surface with clear water and a soft sponge. If needed, a PH-neutral soap solution could be added to the water for more stubborn stains. Always wipe off with warm, clean water.

Never use cleaning agents based on solvents.

Dry with a lint-free, clean cloth.

Dust can be wiped off with a damp, lint-free, clean cloth or a brush with soft bristles, or can be lightly vacuumed with a soft bristle attachment to avoid damaging the surface.

Arte can not be held responsible if damage is caused to the product during the cleaning process.



More info? [Click here](#)



ARTE®

wallcoverings for the ultimate in refinement