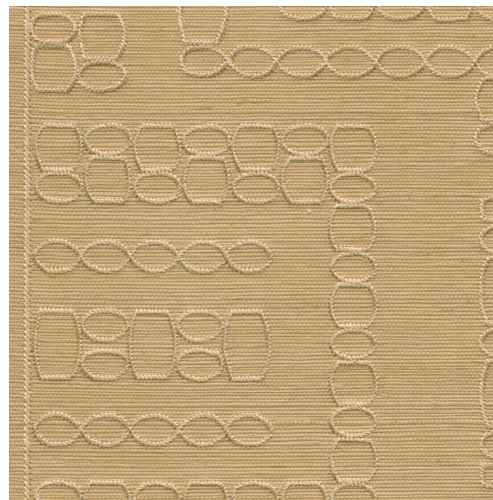


CARE & MAINTENANCE

Collection:	Marquesa
Pattern:	Taio
Reference:	31715 • Winter Sun
Composition:	Natural wallcovering on non-woven backing
Description:	This design pays homage to classic Polynesian wood carvings and their intricate, rounded shapes. The pattern is carefully embroidered onto a delicate sisal fabric and incorporated into the weave's structure. The subtly shiny background shimmers delicately through the weave, adding sophistication. The name of this design was inspired by Taiohae, the capital of the Marquesas Islands.



During installation:



Carefully dab off any adhesive stains immediately (before the adhesive has dried) with clean water and a soft cloth. Do this after installation of each length.

Maintenance:

First try to apply in an inconspicuous place. Try to remove any stains immediately, before the stain can dry out, by dabbing off the surface with a moist, lint-free, clean white cloth. Only use clear water, no soap.

Avoid excessive rubbing of the surface. Avoid excessive soaking of the surface.

Dust can be wiped off with a damp, lint-free, clean cloth or a brush with soft bristles, or can be lightly vacuumed with a soft bristle attachment to avoid damaging the surface.

Arte can not be held responsible if damage is caused to the product during the cleaning process.



More info? [Click here](#)



ARTE®

wallcoverings for the ultimate in refinement