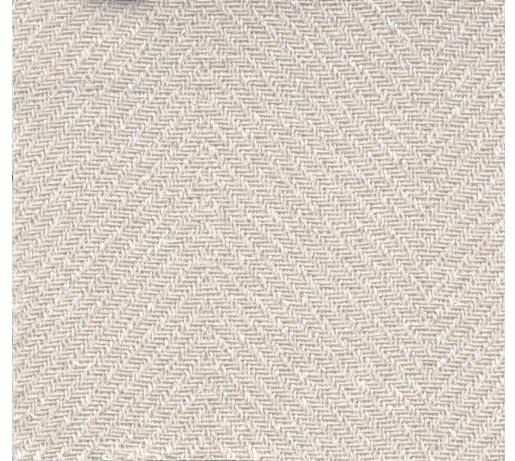


# CARE & MAINTENANCE

---

Collection:	Marquesa
Pattern:	Atuona
Reference:	31720 • Soft Beige
Composition:	Natural wallcovering on non-woven backing
Description:	Atuona's elegant chevron pattern combines the natural charm of paper and hessian in a sophisticated weave with a bohemian twist. This design is named after the historic village of Atuona, where the painter Paul Gauguin and the singer Jacques Brel found their final resting place. Both artists fell in love with the French Polynesian island and never left.



---

## During installation:



Carefully dab off any adhesive stains immediately (before the adhesive has dried) with clean water and a soft cloth. Do this after installation of each length.

## Maintenance:

First try to apply in an inconspicuous place. Try to remove any stains immediately, before the stain can dry out, by dabbing off the surface with a moist, lint-free, clean white cloth. Only use clear water, no soap.

Avoid excessive rubbing of the surface. Avoid excessive soaking of the surface.

Dust can be wiped off with a damp, lint-free, clean cloth or a brush with soft bristles, or can be lightly vacuumed with a soft bristle attachment to avoid damaging the surface.

Arte can not be held responsible if damage is caused to the product during the cleaning process.



More info? [Click here](#)



ARTE®

wallcoverings for the ultimate in refinement