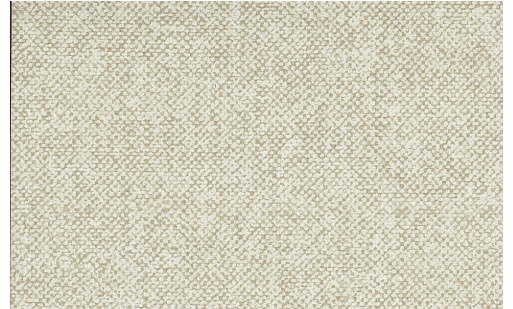


CARE & MAINTENANCE

Collection:	Arte Contract
Pattern:	Belgian Linen
Reference:	32060 • Clay
Composition:	Contract vinyl on fabric backing (Type II)
Description:	A subtle linen imitation that always comes into its own, wherever you put it. Belgian Linen is a timeless, plain wallcovering that is as charming and durable as the most luxurious linen.



During installation:



Carefully wash off any adhesive stains immediately (before the adhesive has dried) with clean water and a soft sponge. Do this after installation of each length.

Maintenance:

First try to apply in an inconspicuous place. Try to remove any stains immediately, before the stain can dry out, by washing off the surface with clear water and a soft sponge. If needed, a PH-neutral soap solution could be added to the water for more stubborn stains. Always wipe off with warm, clean water.

Never use cleaning agents based on solvents.

Dry with a lint-free, clean cloth.

Dust can be wiped off with a damp, lint-free, clean cloth or a brush with soft bristles, or can be lightly vacuumed with a soft bristle attachment to avoid damaging the surface.

Arte can not be held responsible if damage is caused to the product during the cleaning process.



More info? [Click here](#)



ARTE®

wallcoverings for the ultimate in refinement