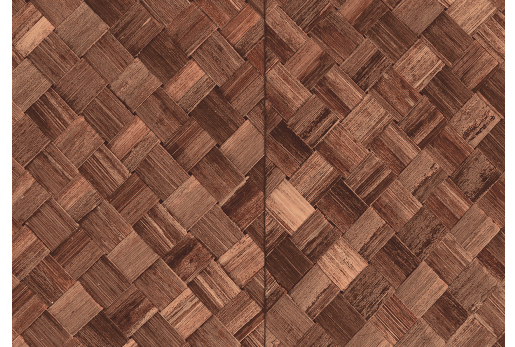


CARE & MAINTENANCE

Collection:	Selva
Pattern:	Pandan
Reference:	34103
Composition:	Vinyl wallpaper on paper backing
Description:	Wickerwork in tile shape is inspired by the tropical plant pandan. The fibres of this plant are diagonally cut into strips and are interwoven. The clean, diagonal lines appear less abstract thanks to the natural look and feel.



During installation:



Carefully wash off any adhesive stains immediately (before the adhesive has dried) with clean water and a soft sponge. Do this after installation of each length.

Maintenance:

First try to apply in an inconspicuous place. Try to remove any stains immediately, before the stain can dry out, by washing off the surface with clear water and a soft sponge. If needed, a PH-neutral soap solution could be added to the water for more stubborn stains. Always wipe off with warm, clean water.

Never use cleaning agents based on solvents.

Dry with a lint-free, clean cloth.

Dust can be wiped off with a damp, lint-free, clean cloth or a brush with soft bristles, or can be lightly vacuumed with a soft bristle attachment to avoid damaging the surface.

Arte can not be held responsible if damage is caused to the product during the cleaning process.



More info? [Click here](#)



ARTE®

wallcoverings for the ultimate in refinement