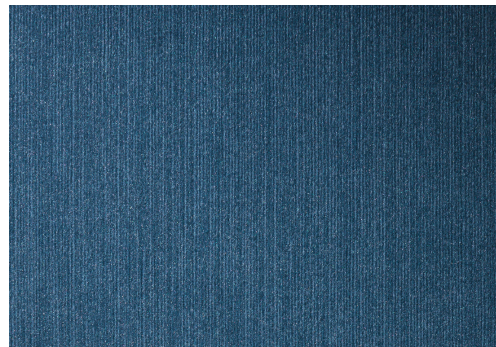


# CARE & MAINTENANCE

---

Collection:	Insolence
Pattern:	Temper
Reference:	34514
Composition:	Wallpaper on non-woven backing
Description:	The fil-à-fil effect, which is woven into the core of the product results in a truly unique plain wallcovering. You can see this very well by looking at the back. This technique makes the textile effect on the wall very realistic.



---

## During installation:



Carefully wipe off any adhesive stains immediately (before the adhesive has dried) with clean water and a soft sponge. Do this after installation of each length.

---

## Maintenance:

First try to apply in an inconspicuous place. Try to remove any stains immediately, before the stain can dry out, by whipping off the surface with clean water and a soft sponge. Only use clear water, no soap.

Dry with a lint-free, clean cloth.

Avoid excessive rubbing of the surface. Avoid excessive soaking of the surface.

Dust can be wiped off with a damp, lint-free, clean cloth or a brush with soft bristles, or can be lightly vacuumed with a soft bristle attachment to avoid damaging the surface.

---

Arte can not be held responsible if damage is caused to the product during the cleaning process.



More info? [Click here](#)



ARTE®

wallcoverings for the ultimate in refinement