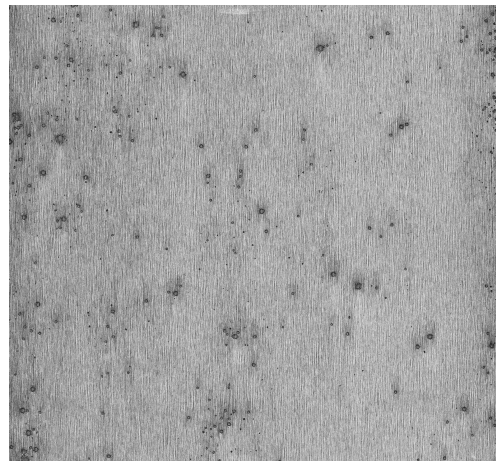


CARE & MAINTENANCE

| | |
|--------------|---|
| Collection: | Metal X |
| Pattern: | Stellar |
| Reference: | 37511 |
| Composition: | Metallic wallcovering on non-woven backing |
| Description: | The great thing about metallics is that they have both a luxurious and industrial feel. Stellar is available in 24 colours. These colours are not just restricted to the traditional metallics of gold, chrome and copper. The range also includes fresh colours such as pink, green and blue, so that you can furnish your house with an atypical metallic look. |



During installation:



Carefully wipe off any adhesive stains immediately (before the adhesive has dried) with clean water and a soft sponge. Do this after installation of each length.

Maintenance:

First try to apply in an inconspicuous place. Try to remove any stains immediately, before the stain can dry out, by wiping off the surface with clean water and a soft sponge. Only use clear water, no soap.

Dry with a lint-free, clean cloth.

Avoid excessive rubbing of the surface. Avoid excessive soaking of the surface.

Dust can be wiped off with a damp, lint-free, clean cloth or a brush with soft bristles, or can be lightly vacuumed with a soft bristle attachment to avoid damaging the surface.

Arte can not be held responsible if damage is caused to the product during the cleaning process.



More info? [Click here](#)



ARTE®

wallcoverings for the ultimate in refinement