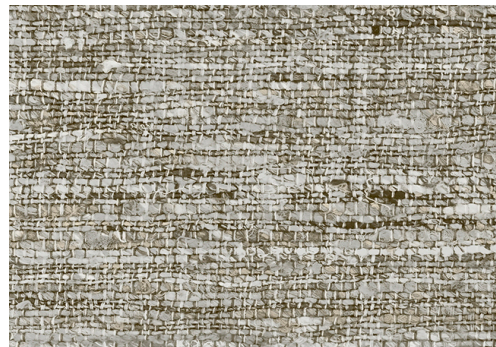


# CARE & MAINTENANCE

---

Collection:	Textura
Pattern:	Aspero
Reference:	40549A • Oyster
Composition:	Vinyl wallpaper on paper backing
Description:	Aspero has a more outspoken, thicker weave, but undeniably retains the authentic linen structure. A lively effect is achieved by combining subtle shades of colour. When used on the wall, it instantly creates a warm, cosy feeling.



---

## During installation:



Carefully wash off any adhesive stains immediately (before the adhesive has dried) with clean water and a soft sponge. Do this after installation of each length.

---

## Maintenance:

First try to apply in an inconspicuous place. Try to remove any stains immediately, before the stain can dry out, by washing off the surface with clear water and a soft sponge. If needed, a PH-neutral soap solution could be added to the water for more stubborn stains. Always wipe off with warm, clean water.

Never use cleaning agents based on solvents.

Dry with a lint-free, clean cloth.

Dust can be wiped off with a damp, lint-free, clean cloth or a brush with soft bristles, or can be lightly vacuumed with a soft bristle attachment to avoid damaging the surface.

---

Arte can not be held responsible if damage is caused to the product during the cleaning process.



More info? [Click here](#)



ARTE®

wallcoverings for the ultimate in refinement