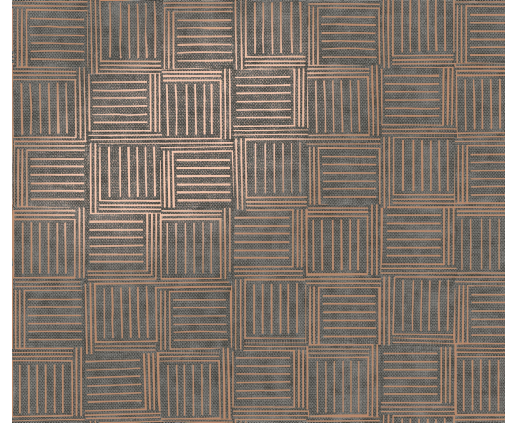


CARE & MAINTENANCE

Collection:	Revera
Pattern:	Contour
Reference:	47530
Composition:	Non-woven wallcovering
Description:	For Contour, we relied on an old stamping technique where the pattern is stamped directly onto the textile. In earlier times, this technique was often used for clothing. The designer of this collection created a mould to make the stamp that served as a basis for this design. Contour combines a tile pattern with a funky interplay of lines.



During installation:



Carefully wipe off any adhesive stains immediately (before the adhesive has dried) with clean water and a soft sponge. Do this after installation of each length.

Maintenance:

First try to apply in an inconspicuous place. Try to remove any stains immediately, before the stain can dry out, by wiping off the surface with clean water and a soft sponge. Only use clear water, no soap.

Dry with a lint-free, clean cloth.

Avoid excessive rubbing of the surface. Avoid excessive soaking of the surface.

Dust can be wiped off with a damp, lint-free, clean cloth or a brush with soft bristles, or can be lightly vacuumed with a soft bristle attachment to avoid damaging the surface.

Arte can not be held responsible if damage is caused to the product during the cleaning process.



More info? [Click here](#)



ARTE®

wallcoverings for the ultimate in refinement