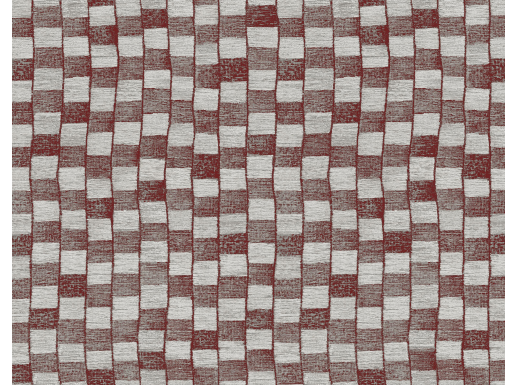


CARE & MAINTENANCE

Collection:	Revera
Pattern:	Pulse
Reference:	47543
Composition:	Non-woven wallcovering
Description:	The cube pattern of Pulse is somewhat surrealistic because of its squiggly lines. This pattern also seems to come from the wardrobe of Twiggy, Jackie Kennedy or Brigitte Bardot. This design with vintage vibes is also finished with flock, providing you with ultra-soft walls.



During installation:



Carefully dab off any adhesive stains immediately (before the adhesive has dried) with clean water and a soft cloth. Do this after installation of each length.

Maintenance:

First try to apply in an inconspicuous place. Try to remove any stains immediately, before the stain can dry out, by dabbing off the surface with a moist, lint-free, clean white cloth. Only use clear water, no soap.

Avoid excessive rubbing of the surface. Avoid excessive soaking of the surface.

Dust can be wiped off with a damp, lint-free, clean cloth or a brush with soft bristles, or can be lightly vacuumed with a soft bristle attachment to avoid damaging the surface.

Arte can not be held responsible if damage is caused to the product during the cleaning process.



More info? [Click here](#)



ARTE®

wallcoverings for the ultimate in refinement