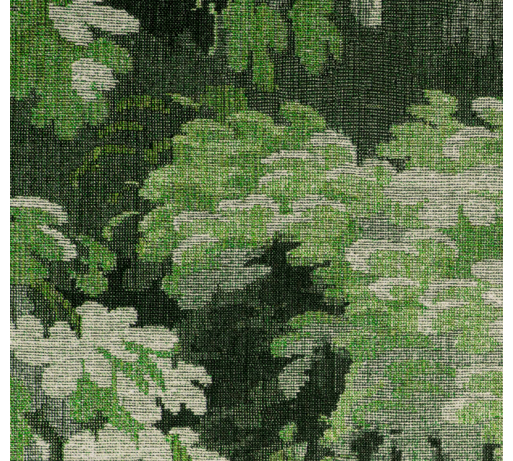


# CARE & MAINTENANCE

---

Collection:	Les Forêts
Pattern:	Dioré
Reference:	48010 • Grass
Composition:	Textile wallcovering on non-woven backing
Description:	Dioré is a wonderful print on a high-pile textile. It is a contemporary, more abstract interpretation of classic tapestries. Thanks to the high quality of the textile and the colour nuances in the design, this wallcovering can barely be distinguished from a hand-tufted carpet. The design owes its name to the protected Forêt de Dioré on the island of Réunion.



---

## During installation:



Carefully dab off any adhesive stains immediately (before the adhesive has dried) with clean water and a soft cloth. Do this after installation of each length.

## Maintenance:

First try to apply in an inconspicuous place. Try to remove any stains immediately, before the stain can dry out, by dabbing off the surface with a moist, lint-free, clean white cloth. Only use clear water, no soap.

Avoid excessive rubbing of the surface. Avoid excessive soaking of the surface.

Dust can be wiped off with a damp, lint-free, clean cloth or a brush with soft bristles, or can be lightly vacuumed with a soft bristle attachment to avoid damaging the surface.

Arte can not be held responsible if damage is caused to the product during the cleaning process.



More info? [Click here](#)



ARTE®

wallcoverings for the ultimate in refinement