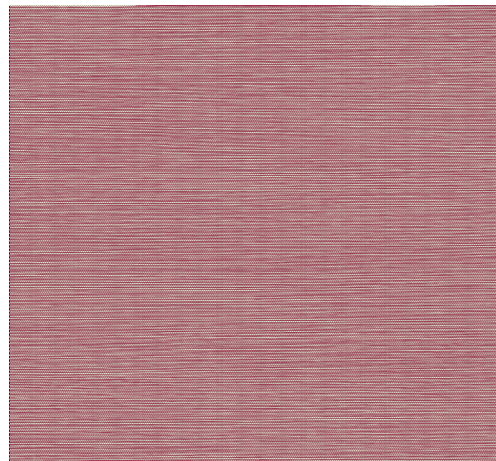


CARE & MAINTENANCE

Collection:	Cantala
Pattern:	Craft
Reference:	48 518 • Framboise
Composition:	Non-woven wallcovering
Description:	For this plain wallcovering, we studied several varieties of finely-woven sisal. Using a high-quality screen printing technique, we were able to make a wallcovering with the realistic look of natural sisal. This is guaranteed to always reproduce an extremely even and restful weave, without detracting from the sophisticated appearance of woven sisal.



During installation:



Carefully wipe off any adhesive stains immediately (before the adhesive has dried) with clean water and a soft sponge. Do this after installation of each length.

Maintenance:

First try to apply in an inconspicuous place. Try to remove any stains immediately, before the stain can dry out, by wiping off the surface with clean water and a soft sponge. Only use clear water, no soap.

Dry with a lint-free, clean cloth.

Avoid excessive rubbing of the surface. Avoid excessive soaking of the surface.

Dust can be wiped off with a damp, lint-free, clean cloth or a brush with soft bristles, or can be lightly vacuumed with a soft bristle attachment to avoid damaging the surface.

Arte can not be held responsible if damage is caused to the product during the cleaning process.



More info? [Click here](#)



ARTE®

wallcoverings for the ultimate in refinement