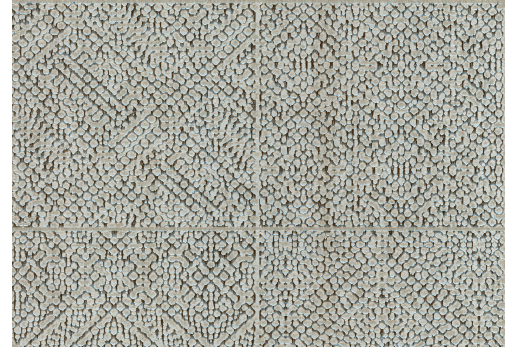


# CARE & MAINTENANCE

---

Collection:	Monochrome
Pattern:	Matrix
Reference:	54060
Composition:	Wallpaper on non-woven backing
Description:	With Matrix on your wall, you will imagine yourself in oriental atmospheres. This design gives you a simple way to create the look of wall tiles in your home. In combination with the shiny relief ink, this pattern is given a very realistic tile structure.



## During installation:



Carefully dab off any adhesive stains immediately (before the adhesive has dried) with clean water and a soft cloth. Do this after installation of each length.

---

## Maintenance:

First try to apply in an inconspicuous place. Try to remove any stains immediately, before the stain can dry out, by dabbing off the surface with a moist, lint-free, clean white cloth. Only use clear water, no soap.

Avoid excessive rubbing of the surface. Avoid excessive soaking of the surface.

Dust can be wiped off with a damp, lint-free, clean cloth or a brush with soft bristles, or can be lightly vacuumed with a soft bristle attachment to avoid damaging the surface.

---

Arte can not be held responsible if damage is caused to the product during the cleaning process.



More info? [Click here](#)



ARTE®

wallcoverings for the ultimate in refinement