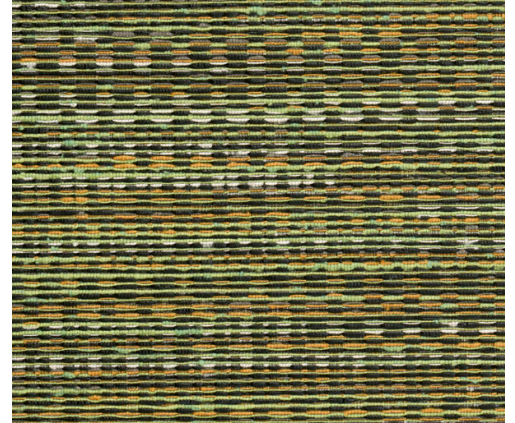


CARE & MAINTENANCE

Collection:	Osmanthus
Pattern:	Geloma
Reference:	54560 • Spring Green
Composition:	Textile wallcovering on non-woven backing
Description:	Geloma is a refined jacquard-woven textile in glossy multicolour threads. The dancing horizontal lines create a playful effect on the one hand, while the dark background and warp provide relief on the other. This design owes its name to the word 'loom', which in turn comes from the Old English word 'geloma'.



During installation:



Carefully wipe off any adhesive stains immediately (before the adhesive has dried) with clean water and a soft sponge. Do this after installation of each length.

Maintenance:

First try to apply in an inconspicuous place. Try to remove any stains immediately, before the stain can dry out, by wiping off the surface with clean water and a soft sponge. Only use clear water, no soap.

Dry with a lint-free, clean cloth.

Avoid excessive rubbing of the surface. Avoid excessive soaking of the surface.

Dust can be wiped off with a damp, lint-free, clean cloth or a brush with soft bristles, or can be lightly vacuumed with a soft bristle attachment to avoid damaging the surface.

Arte can not be held responsible if damage is caused to the product during the cleaning process.



More info? [Click here](#)



ARTE®

wallcoverings for the ultimate in refinement