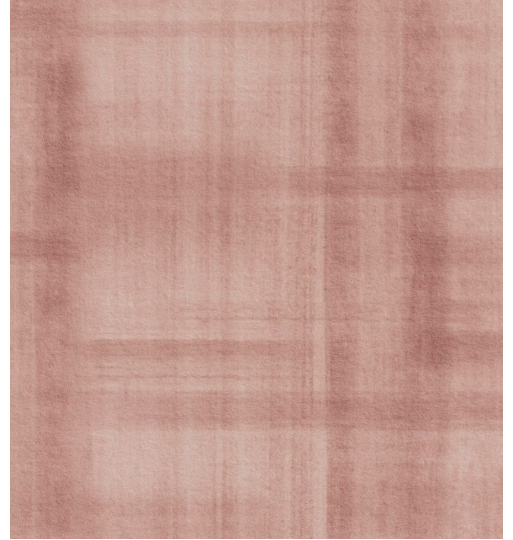


CARE & MAINTENANCE

Collection:	Essentials Washed Linen
Pattern:	Doudeville
Reference:	59590 • Mauve
Composition:	Textile wallcovering on non-woven backing
Description:	This panoramic, printed on real textile, was named after Doudeville, a town in Normandy that's known as the linen capital of France. The subtle design was inspired by the origins of linen and the many flax fields in the coastal areas of Western Europe. After harvesting, the flax stalks are left in the fields, creating a striking striped landscape with beautiful colour variegations. This image, which is so typical of Doudeville and other flax-growing regions, inspired this intriguing striped pattern.



During installation:



Carefully wipe off any adhesive stains immediately (before the adhesive has dried) with clean water and a soft sponge. Do this after installation of each length.

Maintenance:

First try to apply in an inconspicuous place. Try to remove any stains immediately, before the stain can dry out, by wiping off the surface with clean water and a soft sponge. Only use clear water, no soap.

Dry with a lint-free, clean cloth.

Avoid excessive rubbing of the surface. Avoid excessive soaking of the surface.

Dust can be wiped off with a damp, lint-free, clean cloth or a brush with soft bristles, or can be lightly vacuumed with a soft bristle attachment to avoid damaging the surface.

Arte can not be held responsible if damage is caused to the product during the cleaning process.



More info? [Click here](#)



ARTE®

wallcoverings for the ultimate in refinement