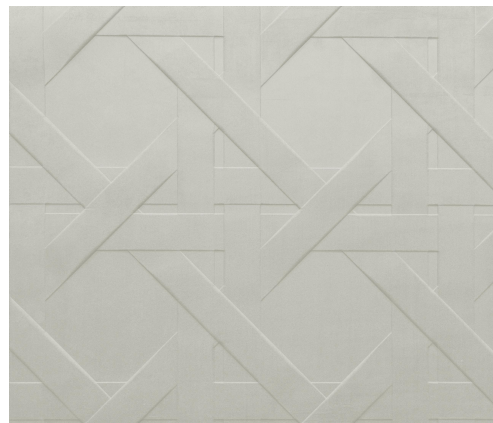


CARE & MAINTENANCE

Collection:	Spectra
Pattern:	Cannage
Reference:	61520
Composition:	3D textile wallcovering on non-woven backing
Description:	With Cannage your walls appear to have been braided. There was a reason for naming the design after this craft. The typical wickerwork of chair caning is very recognisable. The complicated, layered lines capture your attention. The technique reminds one of natural materials such as rattan or reed.



During installation:



Carefully dab off any adhesive stains immediately (before the adhesive has dried) with clean water and a soft cloth. Do this after installation of each length.

Maintenance:

First try to apply in an inconspicuous place. Try to remove any stains immediately, before the stain can dry out, by dabbing off the surface with a moist, lint-free, clean white cloth. Only use clear water, no soap.

Avoid excessive rubbing of the surface. Avoid excessive soaking of the surface.

Dust can be wiped off with a damp, lint-free, clean cloth or a brush with soft bristles, or can be lightly vacuumed with a soft bristle attachment to avoid damaging the surface.

Arte can not be held responsible if damage is caused to the product during the cleaning process.



More info? [Click here](#)



ARTE®

wallcoverings for the ultimate in refinement