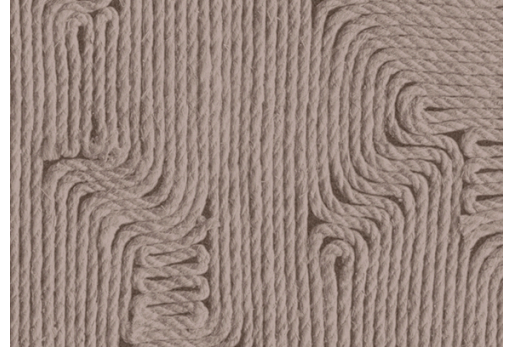


CARE & MAINTENANCE

| | |
|--------------|--|
| Collection: | Manila |
| Pattern: | Edge |
| Reference: | 64520 • Cocoa |
| Composition: | Vinyl wallpaper on paper backing |
| Description: | Wallpaper with floral patterns in combination with organic shapes. Threads of different materials and thicknesses are meticulously placed in patterns by hand, creating a minimalist design with corresponding relief. |



During installation:



Carefully wash off any adhesive stains immediately (before the adhesive has dried) with clean water and a soft sponge. Do this after installation of each length.

Maintenance:

First try to apply in an inconspicuous place. Try to remove any stains immediately, before the stain can dry out, by washing off the surface with clear water and a soft sponge. If needed, a PH-neutral soap solution could be added to the water for more stubborn stains. Always wipe off with warm, clean water.

Never use cleaning agents based on solvents.

Dry with a lint-free, clean cloth.

Dust can be wiped off with a damp, lint-free, clean cloth or a brush with soft bristles, or can be lightly vacuumed with a soft bristle attachment to avoid damaging the surface.

Arte can not be held responsible if damage is caused to the product during the cleaning process.



More info? [Click here](#)



ARTE®

wallcoverings for the ultimate in refinement