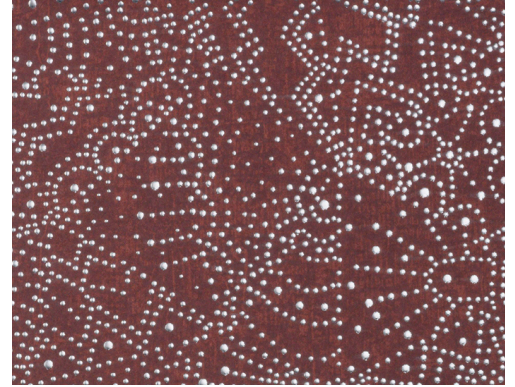


CARE & MAINTENANCE

| | |
|--------------|---|
| Collection: | Kharga |
| Pattern: | Gobi |
| Reference: | 74034 • Blaze Red |
| Composition: | Non-woven wallcovering |
| Description: | As soon as night falls, millions of stars appear in the clear sky of the Gobi Desert, one of the coldest deserts in the world. The comparison with a magnificent starry sky is unmistakable. The contrast of the glittering dots with the deep or soft colours literally elevates this pattern to higher spheres. |



During installation:



Carefully wipe off any adhesive stains immediately (before the adhesive has dried) with clean water and a soft sponge. Do this after installation of each length.

Maintenance:

First try to apply in an inconspicuous place. Try to remove any stains immediately, before the stain can dry out, by wiping off the surface with clean water and a soft sponge. Only use clear water, no soap.

Dry with a lint-free, clean cloth.

Avoid excessive rubbing of the surface. Avoid excessive soaking of the surface.

Dust can be wiped off with a damp, lint-free, clean cloth or a brush with soft bristles, or can be lightly vacuumed with a soft bristle attachment to avoid damaging the surface.

Arte can not be held responsible if damage is caused to the product during the cleaning process.



More info? [Click here](#)



ARTE®

wallcoverings for the ultimate in refinement