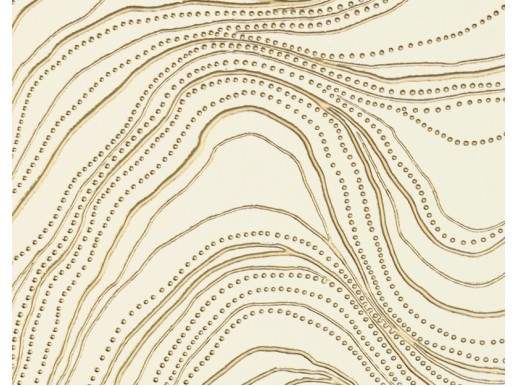


CARE & MAINTENANCE

Collection:	Kharga
Pattern:	Bayuda
Reference:	74040 • Dune Gold
Composition:	Non-woven wallcovering
Description:	The ochre sandbanks in the Sudanese Bayuda Desert are dotted with rocks. Here, gold prospectors tried their luck in the shallow mines. The whimsical lines combined with the sparkling gold in this pattern are clear references to their source of inspiration.



During installation:



Carefully wipe off any adhesive stains immediately (before the adhesive has dried) with clean water and a soft sponge. Do this after installation of each length.

Maintenance:

First try to apply in an inconspicuous place. Try to remove any stains immediately, before the stain can dry out, by wiping off the surface with clean water and a soft sponge. Only use clear water, no soap.

Dry with a lint-free, clean cloth.

Avoid excessive rubbing of the surface. Avoid excessive soaking of the surface.

Dust can be wiped off with a damp, lint-free, clean cloth or a brush with soft bristles, or can be lightly vacuumed with a soft bristle attachment to avoid damaging the surface.

Arte can not be held responsible if damage is caused to the product during the cleaning process.



More info? [Click here](#)



ARTE®

wallcoverings for the ultimate in refinement