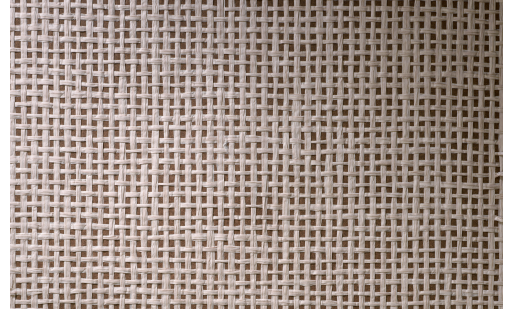


CARE & MAINTENANCE

Collection:	Icons
Pattern:	Waffle Weave
Reference:	85533 • Warm Grey
Composition:	Natural wallcovering on non-woven backing
Description:	The technique used, weaves together strips of paper. This forms a waffled effect that is reminiscent of waffle linen fabric. This creates structure on the wall in a subtle and refined way.



During installation:



Carefully dab off any adhesive stains immediately (before the adhesive has dried) with clean water and a soft cloth. Do this after installation of each length.

Maintenance:

First try to apply in an inconspicuous place. Try to remove any stains immediately, before the stain can dry out, by dabbing off the surface with a moist, lint-free, clean white cloth. Only use clear water, no soap.

Avoid excessive rubbing of the surface. Avoid excessive soaking of the surface.

Dust can be wiped off with a damp, lint-free, clean cloth or a brush with soft bristles, or can be lightly vacuumed with a soft bristle attachment to avoid damaging the surface.

Arte can not be held responsible if damage is caused to the product during the cleaning process.



More info? [Click here](#)



ARTE®

wallcoverings for the ultimate in refinement