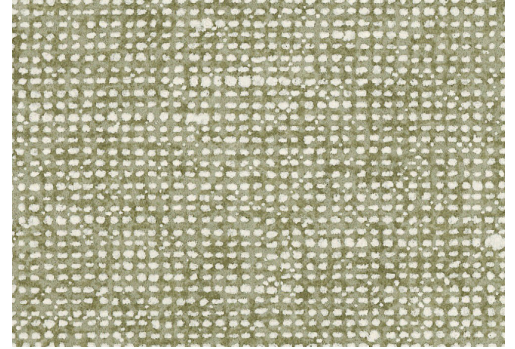


# CARE & MAINTENANCE

---

Collection:	Essentials Les Nuances
Pattern:	Chanderi
Reference:	91511 • Pistachio
Composition:	Wallpaper on non-woven backing
Description:	The slightly structured, matte and bicolour weaving structure is discrete and fairly neutral, but still present. In the colour palette, you will find some soft beige to sand shades, as well as striking colours such as sunny orange and tropical teal.



## During installation:



Carefully wipe off any adhesive stains immediately (before the adhesive has dried) with clean water and a soft sponge. Do this after installation of each length.

---

## Maintenance:

First try to apply in an inconspicuous place. Try to remove any stains immediately, before the stain can dry out, by wiping off the surface with clean water and a soft sponge. Only use clear water, no soap.

Dry with a lint-free, clean cloth.

Avoid excessive rubbing of the surface. Avoid excessive soaking of the surface.

Dust can be wiped off with a damp, lint-free, clean cloth or a brush with soft bristles, or can be lightly vacuumed with a soft bristle attachment to avoid damaging the surface.

---

Arte can not be held responsible if damage is caused to the product during the cleaning process.



More info? [Click here](#)



ARTE®

wallcoverings for the ultimate in refinement