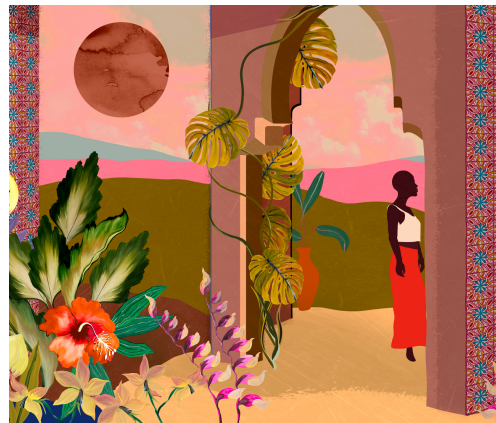


# CARE & MAINTENANCE

---

Collection:	Décors & Panoramiques
Pattern:	Les Mystères de Madagascar
Reference:	97530 • Marrakech
Composition:	Textile wallcovering on non-woven backing
Description:	A unique place on earth. From canyons to beautiful pearly white beaches, this mysterious island in the Indian Ocean has an endless appeal to the imagination. Different geographic and ethnic influences characterise Madagascar. This great diversity is reflected in this coarse linen-effect panorama.



---

## During installation:



Carefully dab off any adhesive stains immediately (before the adhesive has dried) with clean water and a soft cloth. Do this after installation of each length.

---

## Maintenance:

First try to apply in an inconspicuous place. Try to remove any stains immediately, before the stain can dry out, by dabbing off the surface with a moist, lint-free, clean white cloth. Only use clear water, no soap.

Avoid excessive rubbing of the surface. Avoid excessive soaking of the surface.

Dust can be wiped off with a damp, lint-free, clean cloth or a brush with soft bristles, or can be lightly vacuumed with a soft bristle attachment to avoid damaging the surface.

---

Arte can not be held responsible if damage is caused to the product during the cleaning process.



More info? [Click here](#)



ARTE®

wallcoverings for the ultimate in refinement