



# ROSACE

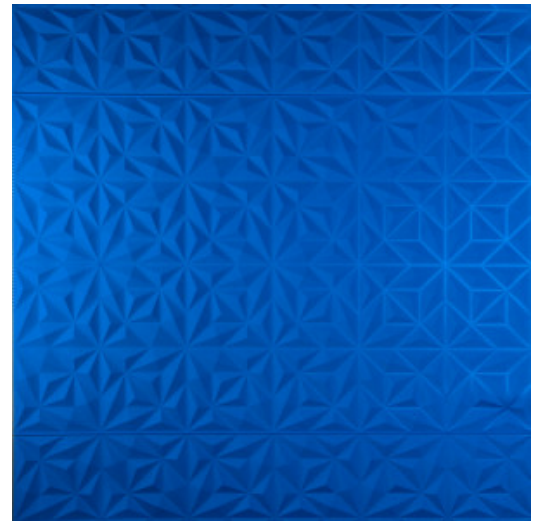
Collection Intrigue

## Story behind the collection

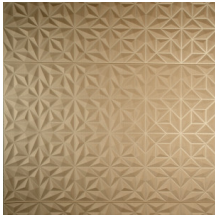
The Intrigue collection is the result of a process that we call thermoforming. As the word might suggest, heat is used to press a design into the fabric. By heating the fabric it acquires a luxurious satin sheen that reflects the light. It is fascinating to see and irresistible to touch. Moreover, as a result of the combination of materials used, this wallcovering will influence in a positive way the acoustics.

## Technical specifications

Reference	<u>10553</u>
Product category	Couture
Composition	3D textile wallcovering on non-woven backing
Dimensions	Width 126 cm (49.61"), sold by the linear metre/yard
Pattern repeat	Straight match 42 cm (16.54")
Remark	Stain and water repellent, positive acoustic effect
Adhesive	Arte Clearpro or a good quality dispersion adhesive
How to paste	Paste the wall
Light resistance	Available upon request
How to remove	Strippable
Fire retardant EU	B-s1, d0
Fire retardant US	Class A
Maintenance	Spongeable during hanging (dab away damp glue)



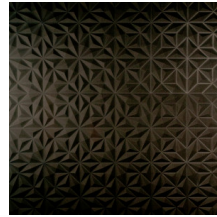
## Colourways (5)



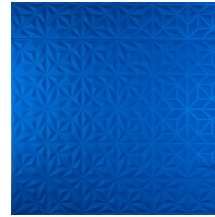
10550



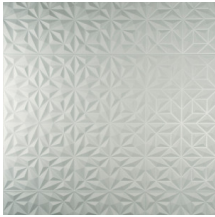
10551



10552

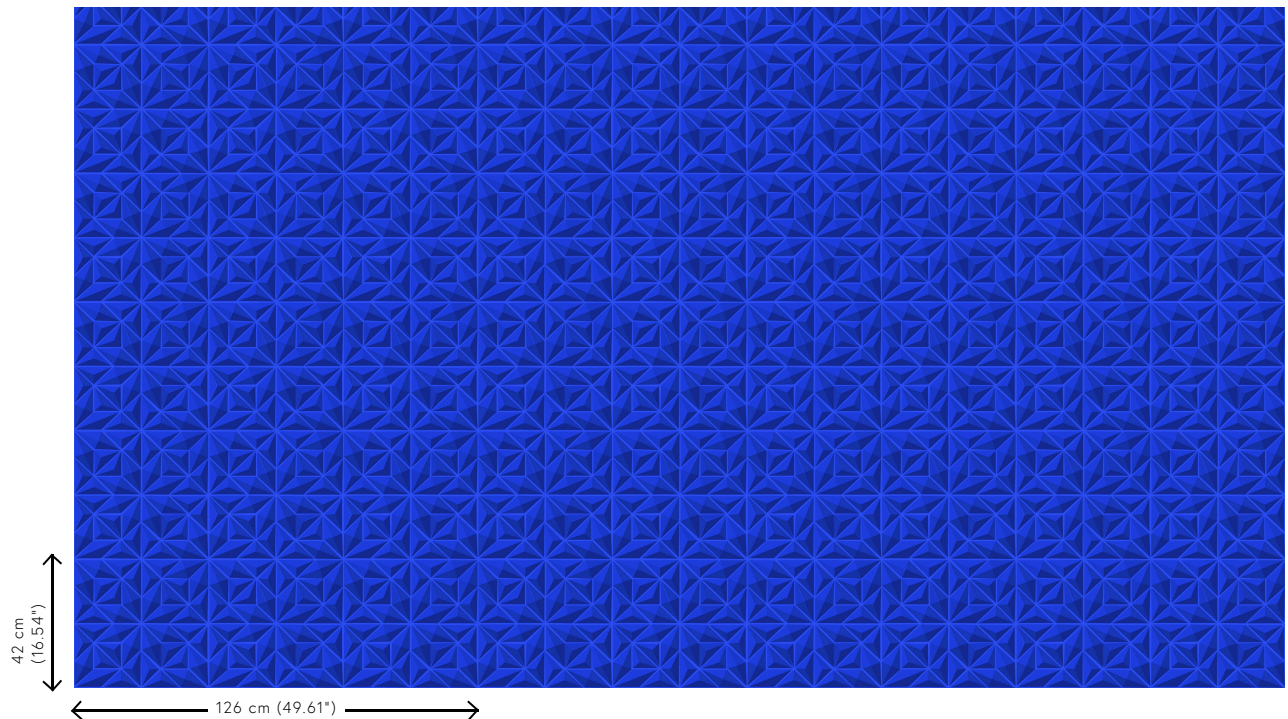


10553



10554

## View



More info? [Click here](#)

Order samples, calculate quantities, view instructional videos, download technical information and more:  
[www.arte-international.com](http://www.arte-international.com)



ARTE®

wallcoverings for the ultimate in refinement