

CASALIAN

Collection Carabao



Story behind the collection

For this collection, we departed for one of the most exotic locations in the world: the paradise that is the Philippines. One of the largest natural riches of this country is the banana tree. The bark of this tree has been used for this unique wallcovering. Cutting down the banana trees is a highly regulated practice. They grow well in the Philippines but only fruit three times. They must then be cut down so that they can grow again. The Carabao collection is made from the bark of the trees that have finished flowering.

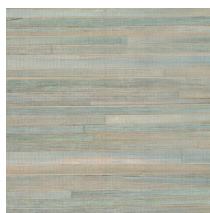
This exotic collection is named after the national animal of the Philippines, the carabao or Asian water buffalo.

Technical specifications

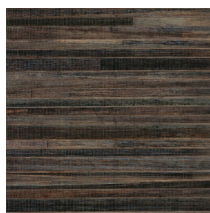
Reference	<u>14023</u> • Cognac
Product category	Couture
Composition	Natural wallcovering on non-woven backing
Description	Handmade wallcovering from banana tree bark
Dimensions	Width 91 cm (35.83"), sold by the linear metre/yard
Pattern repeat	Free match 0 cm (0.00")
Remark	It is specific to this product that you can clearly see the seams; it is an intended effect that emphasizes the authentic charm
Adhesive	Arte Clearpro or a good quality dispersion adhesive
How to paste	Moisten the product, paste the wall
Light resistance	Moderate lightfastness
How to remove	Strippable
Fire retardant EU	B-s1, d0
Fire retardant US	Class A
Maintenance	Washable



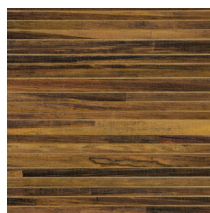
Colourways (12)



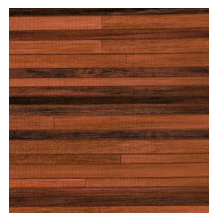
14020



14021



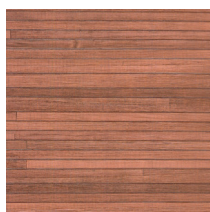
14022



14023



14024



14025



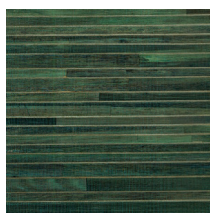
14026



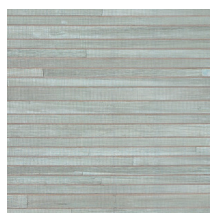
14027



14028



14029



14030



14031

More info? [Click here](#)

Order samples, calculate quantities, view instructional videos, download technical information and more:
www.arte-international.com



ARTE®

wallcoverings for the ultimate in refinement