



# MOIRE

Collection Kharga

## Story behind the collection

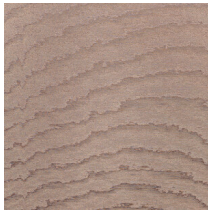
The Kharga oasis was an important stop on the ancient trade route that connected various different oases in Egypt. This tour through the Sahara brings every aspect of the desert to life in the Kharga collection, from the dazzling afternoon sun to the star-studded sky at night and from the shapes of the dunes to the fine structure of desert sand. Even the details and materials used in the traditional carpets and robes of nomads are featured. In short, this collection is highly reminiscent of the mysterious desert life.

## Technical specifications

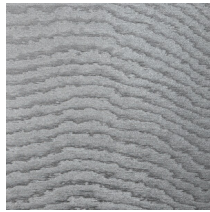
|                   |  |
|-------------------|--|
| Reference         | <u>15008A</u> • Oasis Green  |
| Product category  | Couture  |
| Composition       | Textile wallcovering on non-woven backing  |
| Description       | Hypnotic designs create a moiré effect on a glossy fabric, making each wallcovering unique |
| Dimensions        | Width 140 cm (55.12"), sold by the linear metre/yard                                       |
| Pattern repeat    | Free match 0 cm (0.00")  |
| Remark            | The motives are completely random, thus each metre of textile is unique                    |
| Adhesive          | Arte Clearpro or a good quality dispersion adhesive  |
| How to paste      | Paste the wall   |
| Light resistance  | Good lightfastness   |
| How to remove     | Strippable   |
| Fire retardant EU | B-s1, d0   |
| Fire retardant US | Class A  |
| Maintenance       | Spongeable during hanging (dab away damp glue)   |



## Colourways (5)



15000A



15001A



15008A



15011A



15012A

More info? [Click here](#)

Order samples, calculate quantities, view instructional videos, download technical information and more:  
[www.arte-international.com](http://www.arte-international.com)



---

ARTE®

wallcoverings for the ultimate in refinement