



STRIPE VELVET AND LIN

Collection Flamant Suite III - Velvet

Story behind the collection

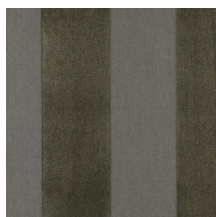
A collection inspired by the timeless look of linen, a material that has been used to decorate interiors for decades. This wallpaper is as warm and tactile as linen, with the same natural appearance. And, just like linen, it is exceptionally durable and breathable and thus allows the walls to breathe.

Technical specifications

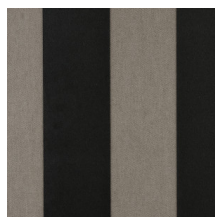
Reference	<u>18102</u> • Noir de Lune
Product category	Refined
Composition	Wallpaper on non-woven backing
Description	Non-woven wallpaper with a linen texture and refined velvet
Dimensions	Rolls of 8.50 m x 0.70 m = 6 m ² (9.30 yds x 27.56" = 64 sq. ft.)
Pattern repeat	Free match 0 cm (0.00")
Adhesive	Arte Clearpro or a good quality dispersion adhesive
How to paste	Paste the wall
Light resistance	Good lightfastness
How to remove	Strippable
Fire retardant EU	B-s1, d0
Fire retardant US	Class A
Maintenance	Spongeable during hanging (dab away damp glue)
IMO Certified	



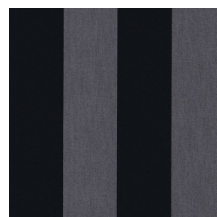
Colourways (12)



18100



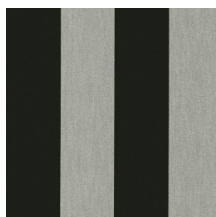
18101



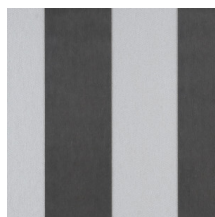
18102



18103



18104



18105



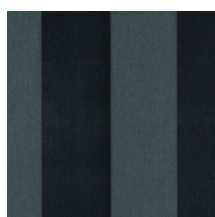
18106



18107



18108



18109



18110



18111

More info? [Click here](#)

Order samples, calculate quantities, view instructional videos, download technical information and more:
www.arte-international.com



ARTE®

wallcoverings for the ultimate in refinement