



# ALMA

Collection Atelier

## Story behind the collection

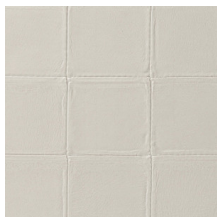
This wallcovering has the authentic look of soft, luxurious leather, complete with its natural nuances and irregularities. The hand-stitched leather details contribute to the realistic look. The use of extra-heavy vinyl was essential for obtaining the realistic texture and the feel of genuine leather.

## Technical specifications

Reference	<u>21015</u>
Product category	Refined
Composition	Vinyl wallpaper on non-woven backing
Description	Extra-heavy vinyl wallpaper with the authentic look of hand-stitched leather
Dimensions	XL-ROLL: Rolls of 10.05 m x 1 m = 10 m <sup>2</sup> (11 yds x 39.37" = 108 sq. ft.)
Pattern repeat	Straight match 5.1 cm (2.01")
Adhesive	Arte Clearpro or a good quality dispersion adhesive
How to paste	Paste the wall
Light resistance	Good lightfastness
Maintenance	Extra-washable
Maintenance US	Type II washable
How to remove	Strippable
Fire retardant EU	B-s2, d0
Fire retardant US	Class A



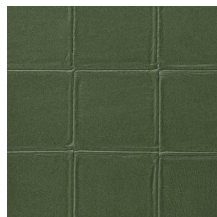
## Colourways (12)



21010



21011



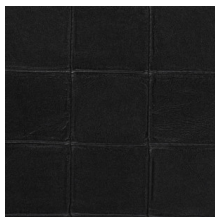
21012



21013



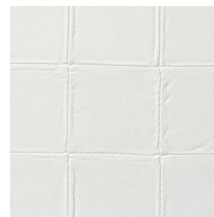
21014



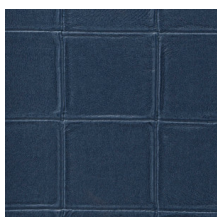
21015



21016



21017



21018



21019

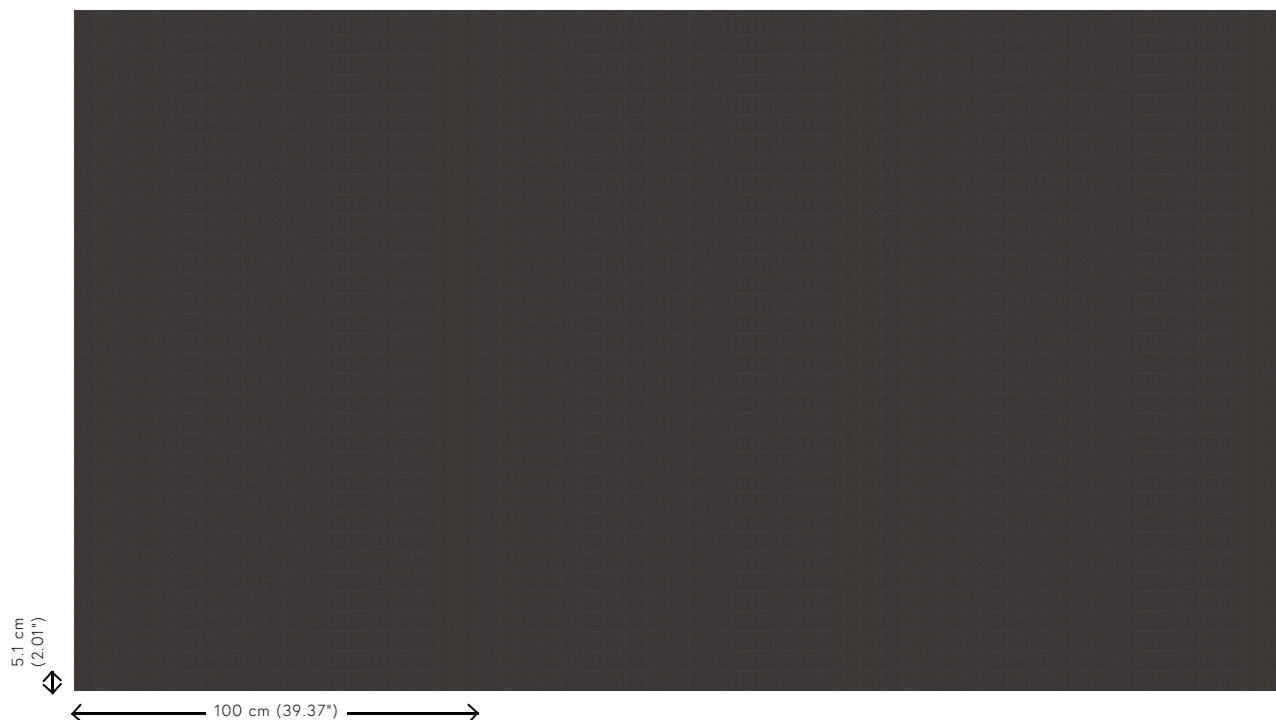


21020



21021

## View



More info? [Click here](#)

Order samples, calculate quantities, view instructional videos, download technical information and more:  
[www.arte-international.com](http://www.arte-international.com)



ARTE®

wallcoverings for the ultimate in refinement