

KOUMBALA

Collection All Naturals

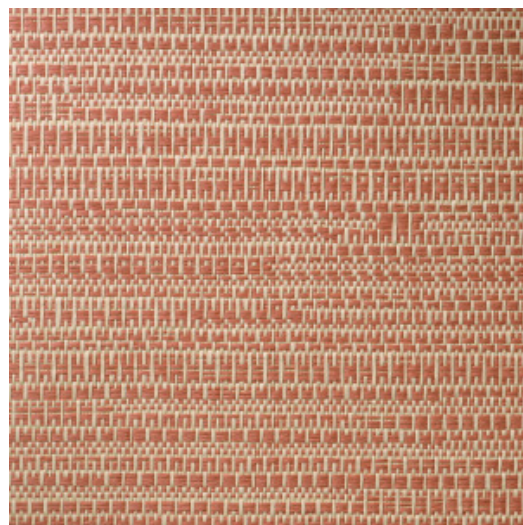


Story behind the collection

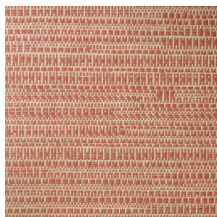
Arte has always had a predilection for unusual materials, with the brand's designers creating superb wallcoverings from many unique materials they find around the world. Designs with natural materials are a mainstay of its collections. Raffia, sisal, mica and banana bark are just a few of the stunning natural products Arte uses for its amazingly diverse range of natural wallcoverings. This collection is a homage to the beauty of these products.

Technical specifications

| | |
|-------------------|---|
| Reference | <u>22060A</u> • Sunny Brick |
| Product category | Exquisite |
| Composition | Natural wallcovering on non-woven backing |
| Description | Jacquard woven wallcovering with a subtle horizontal movement |
| Dimensions | Width 135 cm (53.15"), sold by the linear metre/yard |
| Pattern repeat | Free match 0 cm (0.00") |
| Adhesive | Arte Clearpro or a good quality dispersion adhesive |
| How to paste | Moisten the product, paste the wall |
| Light resistance | Good lightfastness |
| How to remove | Strippable |
| Fire retardant EU | B-s1, d0 |
| Fire retardant US | Class A |
| Maintenance | Spongeable during hanging (dab away damp glue) |



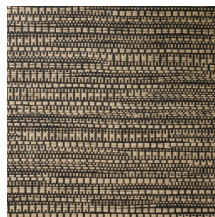
Colourways (6)



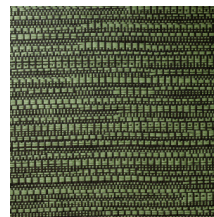
22060A



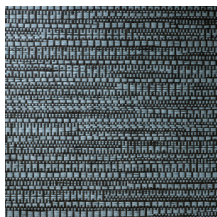
22061A



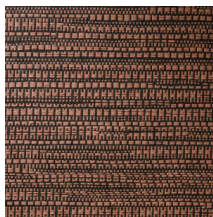
22062A



22063A



22064A



22067A

More info? [Click here](#)

Order samples, calculate quantities, view instructional videos, download technical information and more:
www.arte-international.com



ARTE®

wallcoverings for the ultimate in refinement