



# TRIADE

Collection Amazone 2

## Story behind the collection

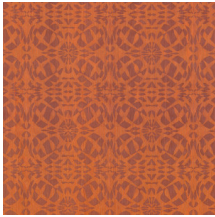
The Amazon rainforest is home to a myriad of amazing colours and unique textures. Consider, for example, the feathers of the macaw, the brightly coloured beak of the toucan or the fragile wings of tropical butterflies. This rainforest was the inspiration for this collection.

## Technical specifications

Reference	<u>23540</u>
Product category	Couture
Composition	Textile wallcovering on non-woven backing
Description	Wallcovering with a pleated fabric and an embossed design
Dimensions	Width 138 cm (54.33"), sold by the linear metre/yard
Pattern repeat	Straight match 32 cm (12.60")
Remark	Textile wallcovering with an embossed pattern
Adhesive	Arte Clearpro or a good quality dispersion adhesive
How to paste	Paste the wall
Light resistance	Good lightfastness
How to remove	Strippable
Fire retardant EU	B-s1, d0
Fire retardant US	Class A
Maintenance	Spongeable during hanging (dab away damp glue)



## Colourways (6)



23540



23541



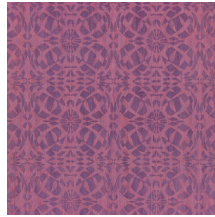
23542



23543

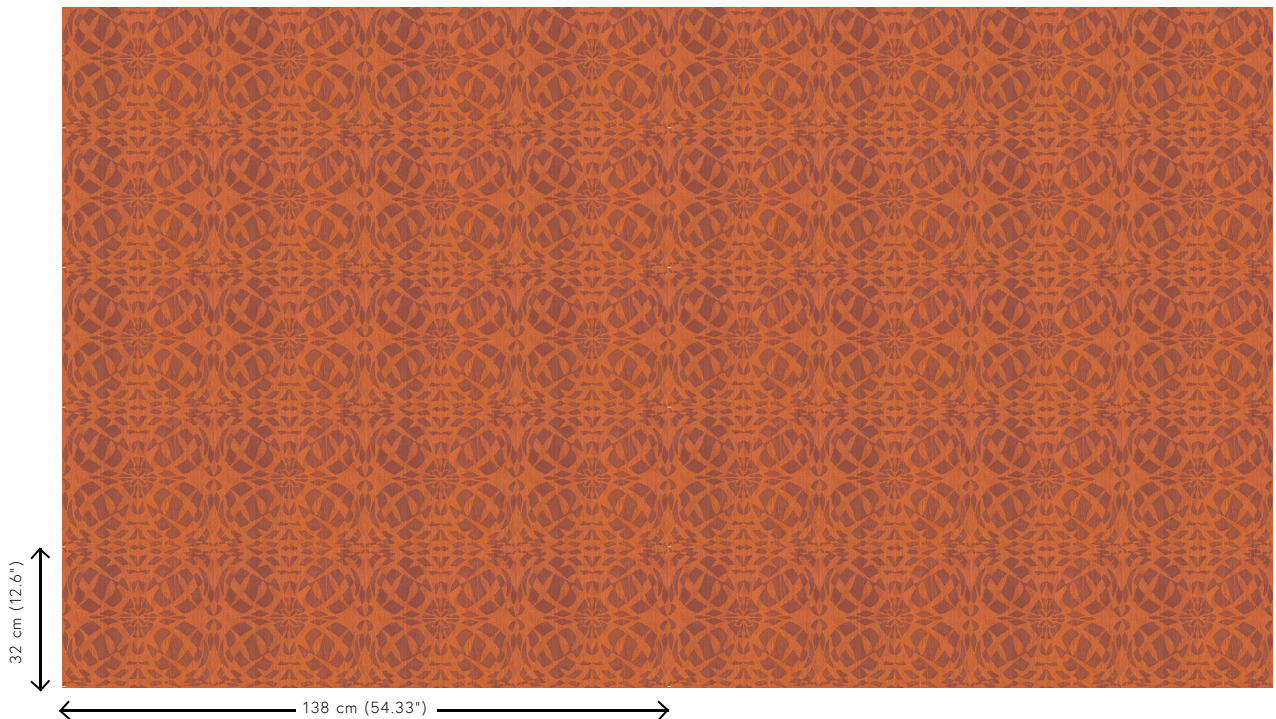


23544



23545

## View



More info? [Click here](#)

Order samples, calculate quantities, view instructional videos, download technical information and more:  
[www.arte-international.com](http://www.arte-international.com)



ARTE®

wallcoverings for the ultimate in refinement