

# ARCILLA

Collection Terra



## Story behind the collection

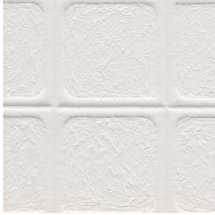
The Terra collection draws on the pure beauty of mosaic, clay and terracotta pottery. The hand-shaped patterns were crafted using lime plaster, imparting rich texture and character. These handmade designs served as inspiration for a 3D textile wallcovering with a super-soft suede look and feel. The result is a highly realistic representation of weathered rock in which every detail and unevenness is rendered with great precision, imbuing a sense of warmth and authenticity.

## Technical specifications

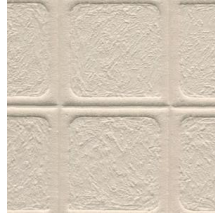
Reference	<u>23930</u> • Pillow
Product category	Couture
Composition	3D textile wallcovering on non-woven backing
Description	3D wallcovering inspired by clay
Dimensions	Width 120 cm (47.24"), sold by the linear metre/yard
Pattern repeat	Free match 0 cm (0.00"), respecting the design height of 24 cm (9.49")
Remark	Stain repellent and positive acoustic effect
Adhesive	Arte Clearpro or a good quality dispersion adhesive
How to paste	Paste the wall
Light resistance	Good lightfastness
How to remove	Strippable
Fire retardant EU	C-s1, d0
Fire retardant US	Class A
Maintenance	Spongeable during hanging (dab away damp glue)



## Colourways (5)



23930



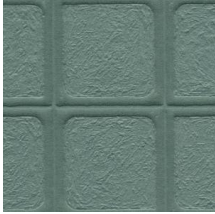
23931



23932

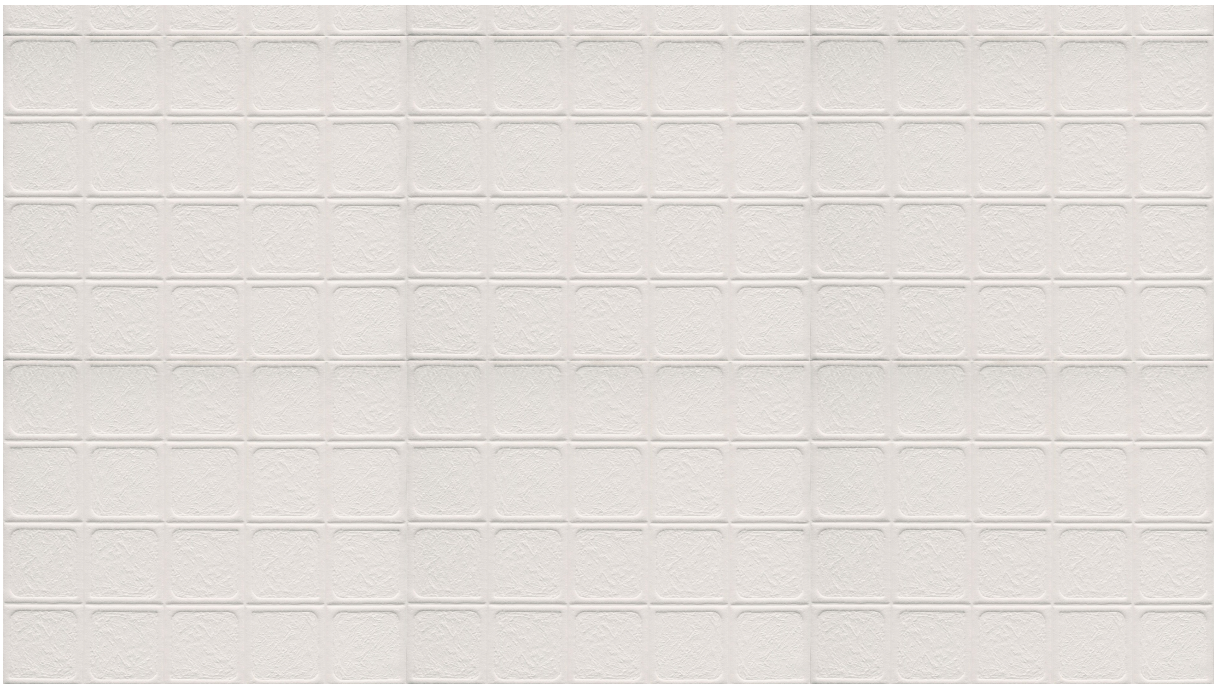


23933



23934

## View



← 120 cm (47.24") →

More info? [Click here](#)

Order samples, calculate quantities, view instructional videos, download technical information and more:  
[www.arte-international.com](http://www.arte-international.com)



ARTE®

wallcoverings for the ultimate in refinement