

LE RAPHIA TISSÉ


Collection Essentials Les Naturels

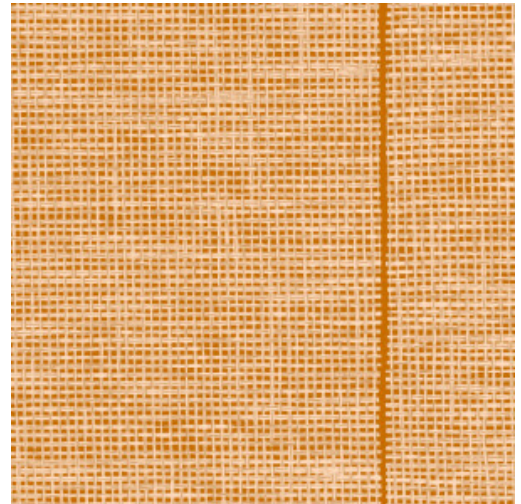


Story behind the collection

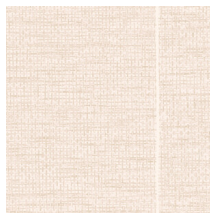
People have always been attracted to natural materials and woven grasses in particular, which have been used in and around the house for centuries. Over time, these fabrics have become sturdier, with more applications. And now these materials have inspired the Les Naturels collection, in which the warmth of raffia, the subtle texture of sisal and the natural looks of woven grass are finally given the attention they deserve. The materials' organic origins and authentic colours bring a sense of calm to interiors, drawing nature indoors. They also combine beautifully with the two botanical prints in this collection.

Technical specifications

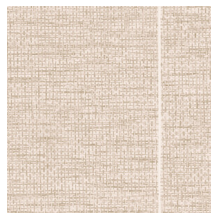
Reference	<u>26746</u> • Mandarine
Product category	Refined
Composition	Wallpaper on non-woven backing
Description	A true-to-nature interpretation of open woven raffia against a coloured background
Dimensions	Rolls of 8.50 m x 0.70 m = 6 m ² (9.30 yds x 27.56" = 64 sq. ft.)
Pattern repeat	Free match 0 cm (0.00")
Remark	The fine lines between the different drops create a luxurious panel effect.
Adhesive	Arte Clearpro or a good quality dispersion adhesive
How to paste	Paste the wall
Light resistance	Good lightfastness
How to remove	Strippable
Fire rating EU	B-s1, d0
Fire rating US	Class A
Maintenance	Washable
IMO Certified	



Colourways (12)



26740



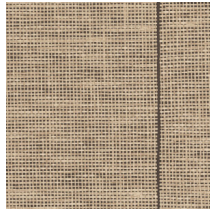
26741



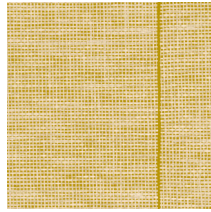
26742



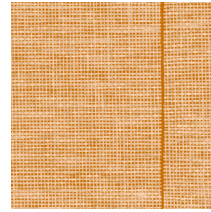
26743



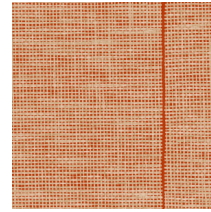
26744



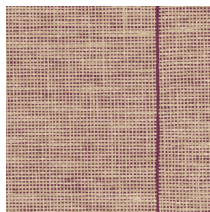
26745



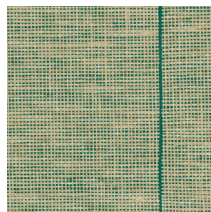
26746



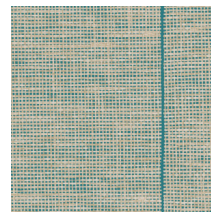
26747



26748



26749

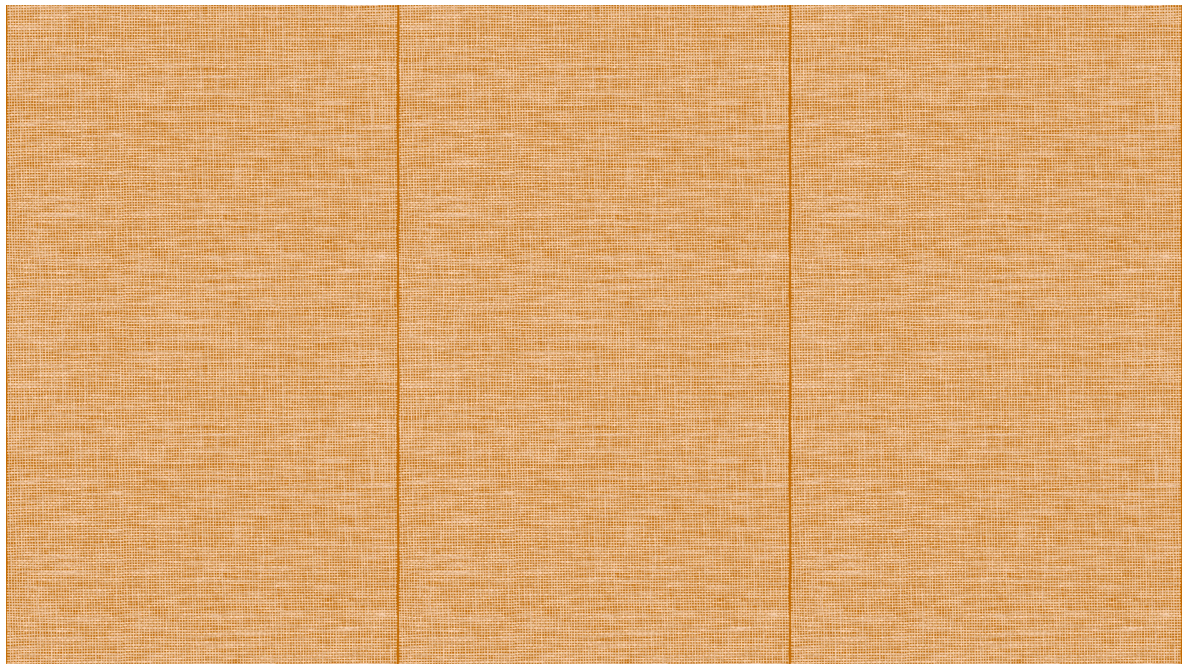


26750



26751

View



← 70 cm (27.56") →

More info? [Click here](#)

Order samples, calculate quantities, view instructional videos, download technical information and more:
www.arte-international.com



ARTE®

wallcoverings for the ultimate in refinement