



VERDURE

Collection Essentials Les Naturels

Story behind the collection

People have always been attracted to natural materials and woven grasses in particular, which have been used in and around the house for centuries. Over time, these fabrics have become sturdier, with more applications. And now these materials have inspired the Les Naturels collection, in which the warmth of raffia, the subtle texture of sisal and the natural looks of woven grass are finally given the attention they deserve. The materials' organic origins and authentic colours bring a sense of calm to interiors, drawing nature indoors. They also combine beautifully with the two botanical prints in this collection.

Technical specifications

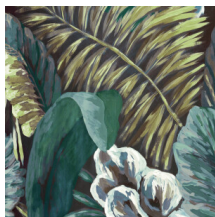
Reference	<u>26762</u> • Winter Garden
Product category	Exquisite
Composition	Textile wallcovering on non-woven backing
Description	The lush, botanic design draws on traditional tapestries for inspiration and was transferred onto a luxury fil-à-fil fabric
Dimensions	Width 130 cm (51.18"), sold by the linear metre/yard
Pattern repeat	Straight match 100 cm (39.37")
Adhesive	Arte Clearpro or a good quality dispersion adhesive
How to paste	Paste the wall
Light resistance	Good lightfastness
How to remove	Strippable
Fire retardant EU	B-s1, d0
Fire retardant US	Class A
Maintenance	Spongeable during hanging (dab away damp glue)



Colourways (3)



26760



26761



26762

View



More info? [Click here](#)

Order samples, calculate quantities, view instructional videos, download technical information and more:
www.arte-international.com



ARTE®

wallcoverings for the ultimate in refinement