

RÊVERIE TROPICALE

Collection Essentials Les Naturels



Story behind the collection

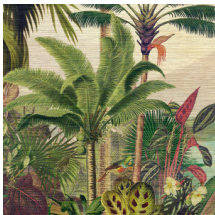
People have always been attracted to natural materials and woven grasses in particular, which have been used in and around the house for centuries. Over time, these fabrics have become sturdier, with more applications. And now these materials have inspired the Les Naturels collection, in which the warmth of raffia, the subtle texture of sisal and the natural looks of woven grass are finally given the attention they deserve. The materials' organic origins and authentic colours bring a sense of calm to interiors, drawing nature indoors. They also combine beautifully with the two botanical prints in this collection.

Technical specifications

Reference	<u>26770</u> • Jungle Green
Product category	Exquisite
Composition	Non-woven wallcovering
Description	A dreamy panoramic of a lush oasis, with a subtle woven grass adding a surprising accent in the background
Dimensions	Panoramic of 300 cm x 300 cm = 9 m ² (118.11" x 118.11" = 97 sq. ft.)
Remark	The pattern is repeatable, allowing several panoramics to be joined together.
Adhesive	Arte Clearpro or a good quality dispersion adhesive
How to paste	Paste the wall
Light resistance	Good lightfastness
How to remove	Strippable
Fire retardant EU	B-s1, d0
Fire retardant US	Class A
Maintenance	Washable
IMO Certified	



Colourways (2)

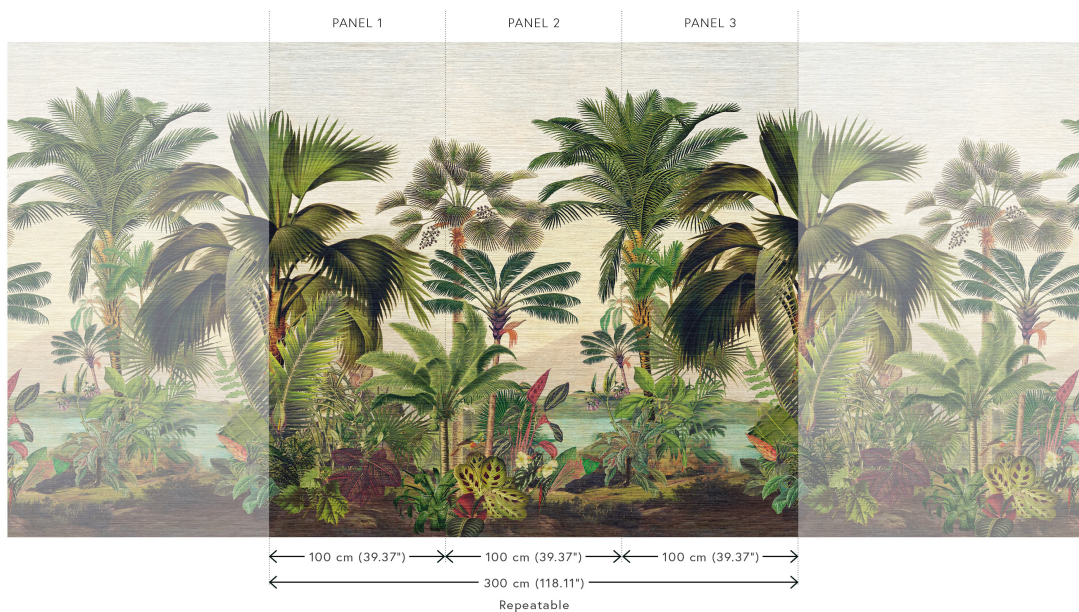


26770



26771

View



More info? [Click here](#)

Order samples, calculate quantities, view instructional videos, download technical information and more:
www.arte-international.com



ARTE®

wallcoverings for the ultimate in refinement