



RÊVERIE TROPICALE

Collection Décors & Panoramiques

Story behind the collection

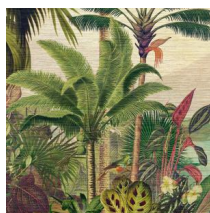
Each panoramic or decor immerses you in a fairy-tale or intriguing story. Not only the pattern appeals to the imagination, the material used is also surprising. From velvety soft silk looks and bouclé fabrics to sophisticated linen effects.

Technical specifications

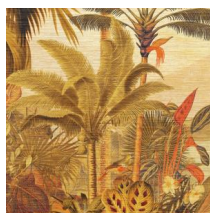
Reference	<u>26770A</u> • Jungle Green
Product category	Exquisite
Composition	Non-woven wallcovering
Description	A dreamy panoramic of a lush oasis, with a subtle woven grass adding a surprising accent in the background
Dimensions	Panoramic of 300 cm x 300 cm = 9 m ² (118.11" x 118.11" = 97 sq. ft.)
Remark	The pattern is repeatable, allowing several panoramics to be joined together.
Adhesive	Arte Clearpro or a good quality dispersion adhesive
How to paste	Paste the wall
Light resistance	Good lightfastness
How to remove	Strippable
Fire retardant EU	B-s1, d0
Fire retardant US	Class A
Maintenance	Washable
IMO Certified	



Colourways (2)



26770A



26771A

View



More info? [Click here](#)

Order samples, calculate quantities, view instructional videos, download technical information and more:
www.arte-international.com



ARTE®

wallcoverings for the ultimate in refinement