

PALAZZO

Collection Corium



Story behind the collection

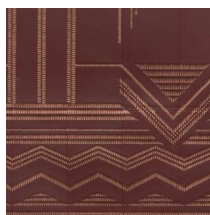
The Corium collection offers a contemporary interpretation of classical patterns from the Early Renaissance. Authentic historical motifs are subtly interwoven throughout the collection. Crafted from premium caprine leather, supple yet strong with a luxurious finish, the collection takes its name from the Latin word corium, underlining the very essence of leather.

Technical specifications

Reference	27411 • Mink
Product category	Couture
Composition	Natural wallcovering on non-woven backing
Description	A refined interplay of lines, paired with meticulously applied embroidery on satin-finished leather
Dimensions	Width 100 cm (39.37") / sold by the linear metre/yard
Pattern repeat	Drop match 80/40 cm (31.50"/15.75"), respecting the block height of 20 cm (7.87")
Remark	Wallcovering crafted from 100% caprine leather. Subtle imperfections, irregularities and colour variations may occur. Small deviations in the dimensions of the hand-stitched leather are inherent to the artisanal production process. As a result, a perfectly precise match during installation cannot always be guaranteed.
Adhesive	Arte Clearpro or a good quality dispersion adhesive
How to paste	Paste the wall
Light resistance	Moderate lightfastness
How to remove	Strippable
Fire rating EU	D-s1, d0
Fire rating US	Class A
Maintenance	Nonwashable



Colourways (2)



27410



27411

View



More info? [Click here](#)

Order samples, calculate quantities, view instructional videos, download technical information and more:
www.arte-international.com



ARTE®

wallcoverings for the ultimate in refinement