

GALLOP


Collection Wildwalk



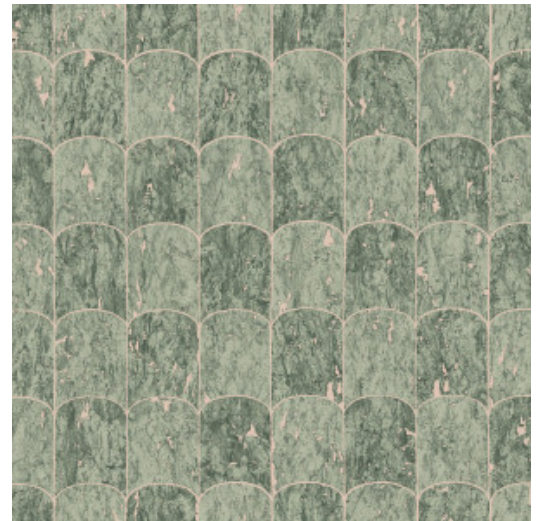
Story behind the collection

Join the adventure and discover the looks of the most challenging natural materials.

Technical specifications

Reference	<u>28024</u>
Product category	Exquisite
Composition	Non-woven wallcovering
Description	A rhythmic pattern that reminds of the zebra's hoofprints, reminiscent of a combination of hand-cut cork fragments
Dimensions	Width 90 cm (35.43"), sold by the linear metre/yard
Pattern repeat	Free match 0 cm (0.00"), respecting the design height of 21.30 cm (8.40")
Adhesive	Arte Clearpro or a good quality dispersion adhesive
How to paste	Paste the wall
Light resistance	Good lightfastness
How to remove	Strippable
Fire retardant EU	B-s1, d0
Fire retardant US	Class A
Maintenance	Washable
IMO Certified	

0493/22



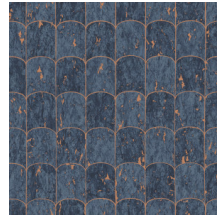
Colourways (5)



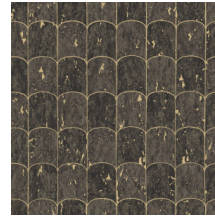
28020



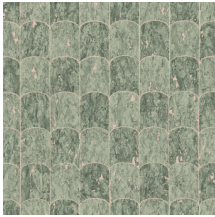
28021



28022

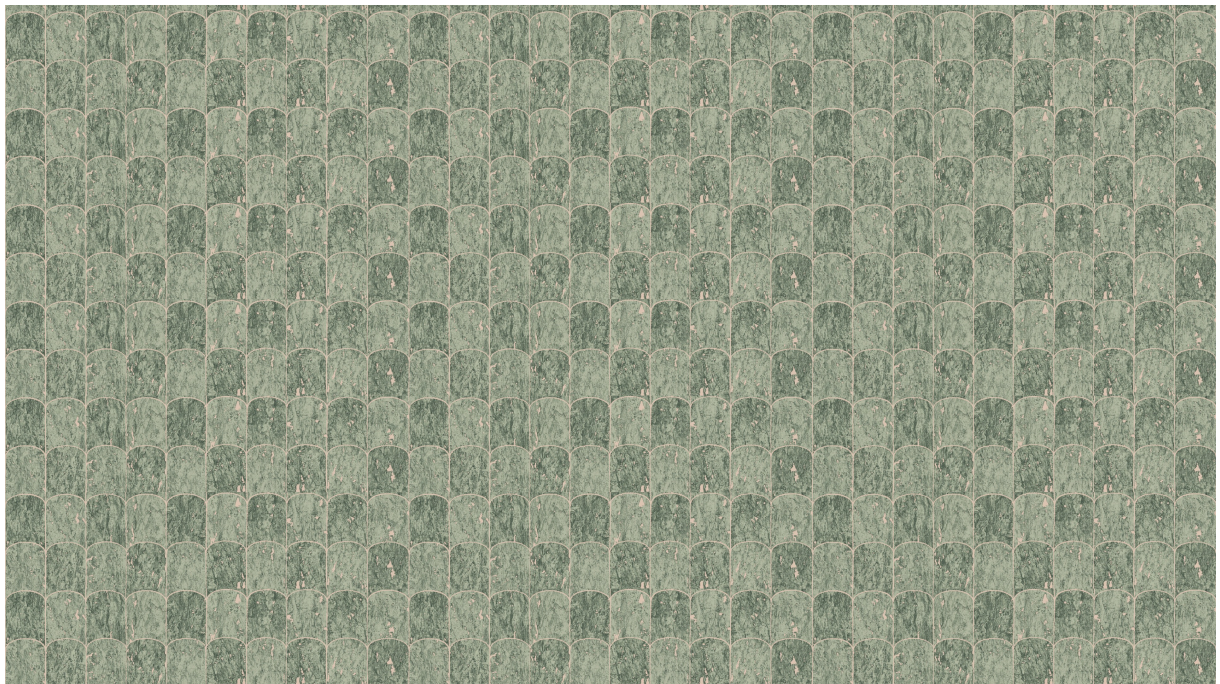


28023



28024

View



← 90 cm (35.43") →

More info? [Click here](#)

Order samples, calculate quantities, view instructional videos, download technical information and more:
www.arte-international.com



ARTE®

wallcoverings for the ultimate in refinement