



NOBLE

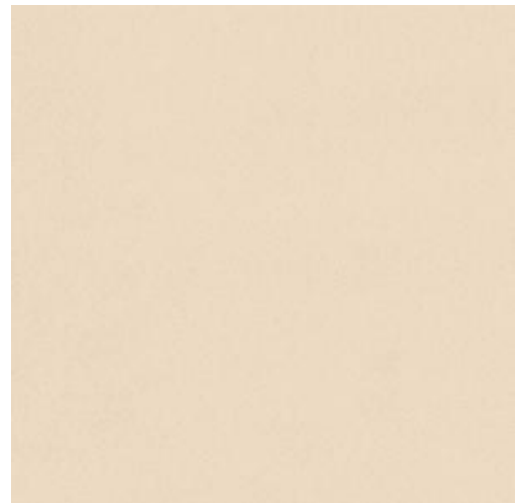
Collection Marquesa

Story behind the collection

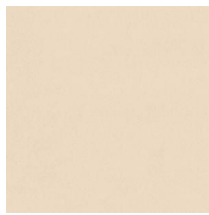
Dramatic cliffs, pristine beaches and majestic palm trees: the Marquesas Islands tick all the boxes. Add a rich historical past to this already intriguing combination, and you can see why the Polynesian archipelago inspired the Marquesa collection. This exclusive wallcovering captures the natural splendour of these islands, in addition to paying tribute to their rich cultural heritage. It is a collection with influences from indigenous art and centuries-old crafts.

Technical specifications

Reference	<u>28511A</u> • Dune
Product category	Exquisite
Composition	Textile wallcovering on non-woven backing
Description	Plain textile wallcovering with the look and feel of soft suede
Dimensions	Width 140 cm (55.12"), sold by the linear metre/yard
Pattern repeat	Free match 0 cm (0.00")
Adhesive	Arte Clearpro or a good quality dispersion adhesive
How to paste	Paste the wall
Light resistance	Good lightfastness
How to remove	Strippable
Fire retardant EU	B-s1, d0
Fire retardant US	Class A
Maintenance	Spongeable during hanging (dab away damp glue)



Colourways (10)



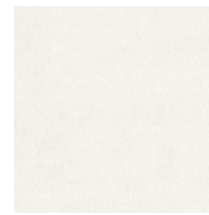
28511A



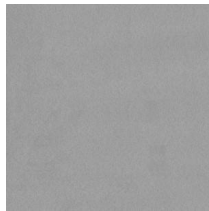
28513A



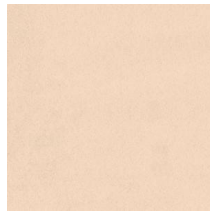
28515A



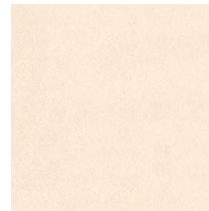
31750



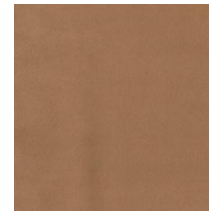
31751



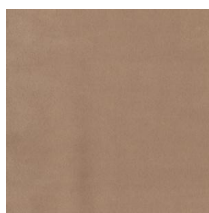
31752



31753



31754



31755



31756

More info? [Click here](#)

Order samples, calculate quantities, view instructional videos, download technical information and more:
www.arte-international.com



ARTE®

wallcoverings for the ultimate in refinement