



# Iona

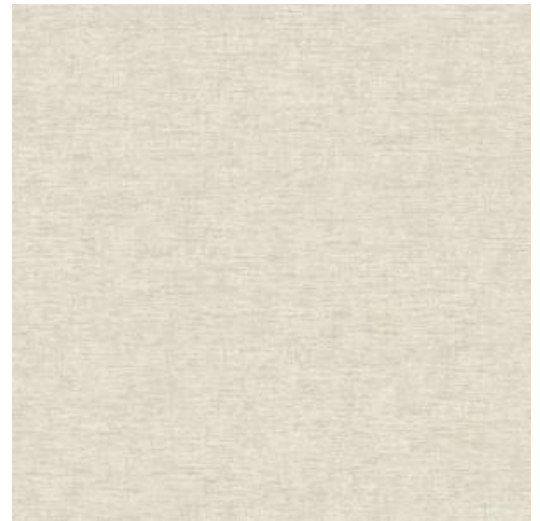
## Collection Woven Island

### Story behind the collection

Woven Island offers a beautiful blend of geometric prints and textile textures. The collection's name refers to the origins of these textiles. Many fabrics come from islands across the world, where locals have traditionally worked with natural fibres. In many of these places, textiles are still handwoven today.

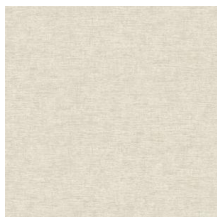
### Technical specifications

Reference	<u>28840</u>
Composition	Non-woven wallcovering
Dimensions	Rolls of 10.05 m x 0.53 m (11 yds x 20.86")
Pattern repeat	Free match 0 cm (0.00"), or drop match 64/32
Adhesive	Arte Clearpro or a good quality dispersion adhesive
How to paste	Paste the wall
Light resistance	Good lightfastness
How to remove	Strippable
Maintenance	Scrubable





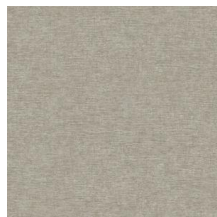
## Colourways (6)



28840



28841



28842



28843



28844



28845

More info? [Click here](#)

Order samples, calculate quantities, view instructional videos, download technical information and more:  
[www.arte-international.com](http://www.arte-international.com)

