

CORDUROY

Collection Lush



Story behind the collection

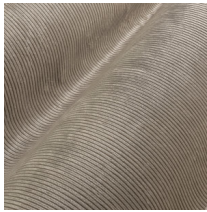
The rich fabrics of rib velvet, lush botanical prints and sophisticated weaving techniques make Lush a very detailed and luxurious collection. The cool metal accents combine perfectly with the soft, velvet fabrics and complete the look.

Technical specifications

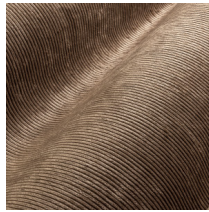
| | |
|-------------------|--|
| Reference | <u>29516</u> |
| Product category | Couture |
| Composition | Textile wallcovering on non-woven backing |
| Description | A wide ribbed velvet structure |
| Dimensions | Width 135 cm (53.15"), sold by the linear metre/yard |
| Pattern repeat | Free match 0 cm (0.00") |
| Remark | Typical for velvet are the colour changes between the different panels and when stroking the fabric. This gives the collection Lush beautiful colour dynamics that ensure a luxurious appearance |
| Adhesive | Arte Clearpro or a good quality dispersion adhesive |
| How to paste | Paste the wall |
| Light resistance | Good lightfastness |
| How to remove | Strippable |
| Fire retardant EU | B-s1, d0 |
| Fire retardant US | Class A |
| Maintenance | Spongeable during hanging (dab away damp glue) |



Colourways (10)



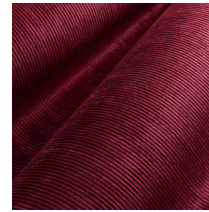
29510



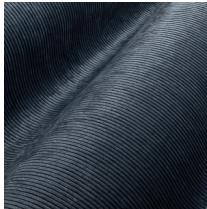
29511



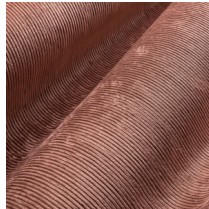
29512



29513



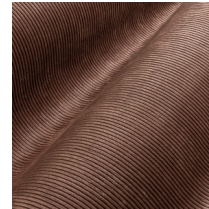
29514



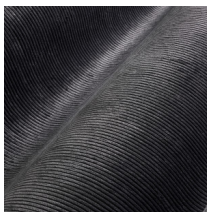
29515



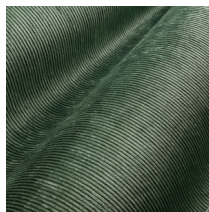
29516



29517



29518



29519

More info? [Click here](#)

Order samples, calculate quantities, view instructional videos, download technical information and more:
www.arte-international.com



ARTE®

wallcoverings for the ultimate in refinement