

TROPICALIA

Collection Lush



Story behind the collection

The rich fabrics of rib velvet, lush botanical prints and sophisticated weaving techniques make Lush a very detailed and luxurious collection. The cool metal accents combine perfectly with the soft, velvet fabrics and complete the look.

Technical specifications

Reference	<u>29530</u>
Product category	Couture
Composition	Textile wallcovering on non-woven backing
Description	A rich velvet textile with an image of tropical leaves
Dimensions	Width 135 cm (53.15"), sold by the linear metre/yard
Pattern repeat	Straight match 137 cm (53.94")
Remark	Typical for velvet are the colour changes between the different panels and when stroking the fabric. This gives the collection Lush beautiful colour dynamics that ensure a luxurious appearance
Adhesive	Arte Clearpro or a good quality dispersion adhesive
How to paste	Paste the wall
Light resistance	Good lightfastness
How to remove	Strippable
Fire retardant EU	B-s1, d0
Fire retardant US	Class A
Maintenance	Spongeable during hanging (dab away damp glue)



Colourways (2)

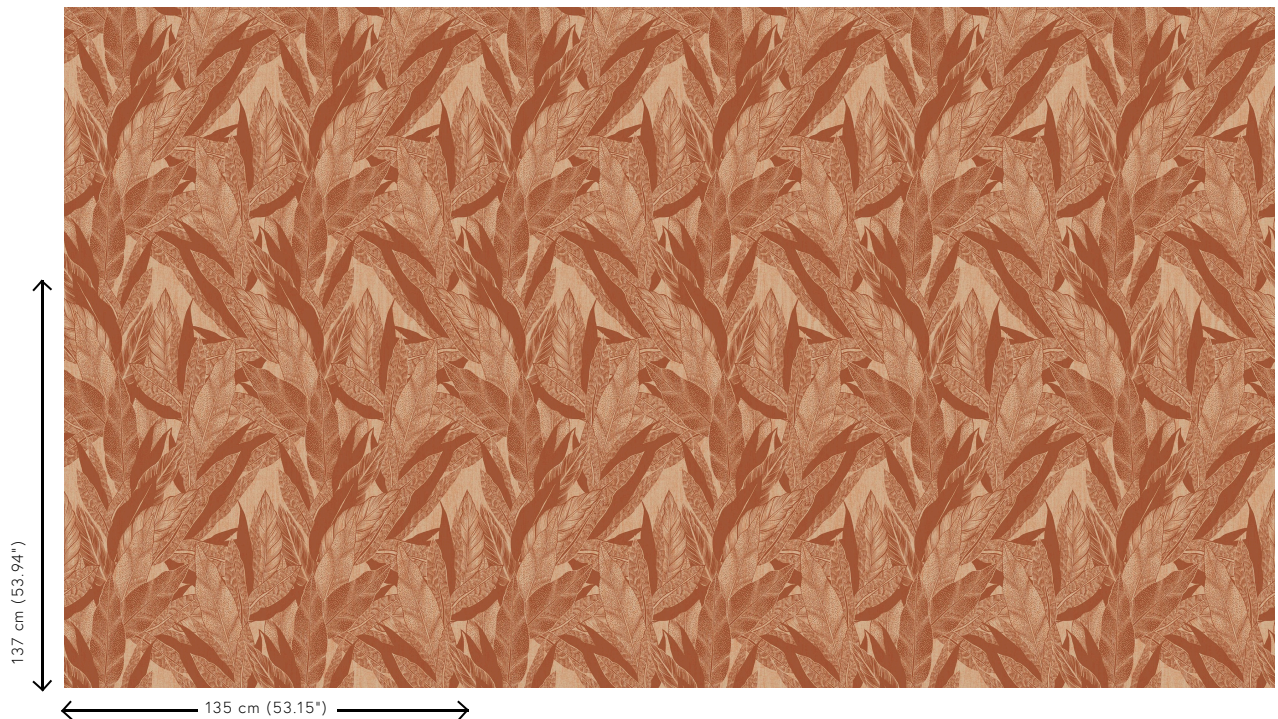


29530



29531

View



More info? [Click here](#)

Order samples, calculate quantities, view instructional videos, download technical information and more:
www.arte-international.com



ARTE®

wallcoverings for the ultimate in refinement