



GRANDE STRIPE

Collection Flamant Suite II - Les Rayures

Story behind the collection

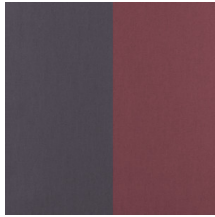
The name speaks for itself. This entire collection revolves around one design, stripes. Without doubt, the simplest pattern in the world but one that still offers endless interior styling options. Simply by changing the direction, a stripe pattern can create an entirely different spatial effect.

Technical specifications

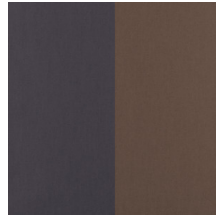
| | |
|-------------------|--|
| Reference | <u>30000</u> • Chocolat et Rouge Castille |
| Product category | Refined |
| Composition | Non-woven wallcovering |
| Description | Wallpaper with a refined linen texture |
| Dimensions | Rolls of 8.50 m x 0.70 m = 6 m ² (9.30 yds x 27.56" = 64 sq. ft.) |
| Pattern repeat | Free match 0 cm (0.00") |
| Adhesive | Arte Clearpro or a good quality dispersion adhesive |
| How to paste | Paste the wall |
| Light resistance | Good lightfastness |
| How to remove | Strippable |
| Fire retardant EU | B-s1, d0 |
| Fire retardant US | Class A |
| Maintenance | Extra-washable |
| IMO Certified |  0493/22 |



Colourways (10)



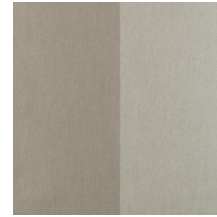
30000



30001



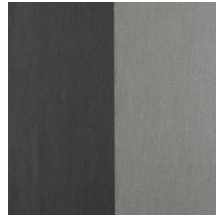
30002



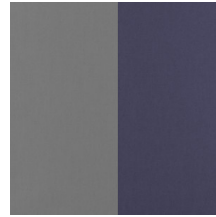
30003



30004



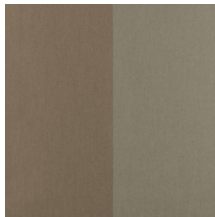
30005



30006



30007



30008



30009

More info? [Click here](#)

Order samples, calculate quantities, view instructional videos, download technical information and more:
www.arte-international.com



ARTE®

wallcoverings for the ultimate in refinement