



GRANDE STRIPE

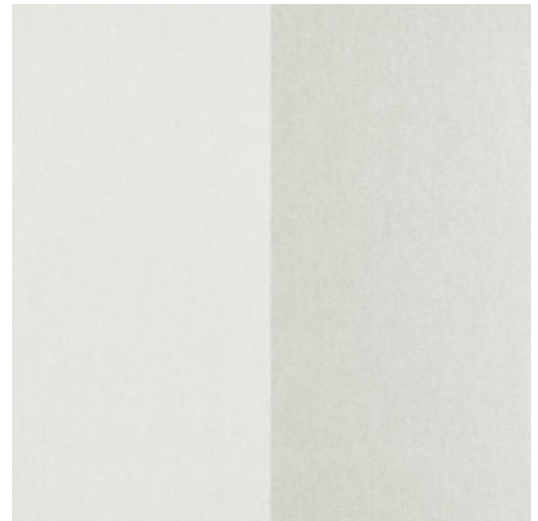
Collection Flamant Suite II - Les Rayures

Story behind the collection

The name speaks for itself. This entire collection revolves around one design, stripes. Without doubt, the simplest pattern in the world but one that still offers endless interior styling options. Simply by changing the direction, a stripe pattern can create an entirely different spatial effect.

Technical specifications

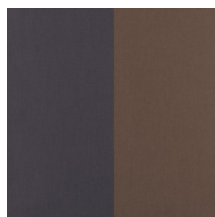
Reference	<u>30002</u> • Perle et Smoke
Product category	Refined
Composition	Non-woven wallcovering
Description	Wallpaper with a refined linen texture
Dimensions	Rolls of 8.50 m x 0.70 m = 6 m ² (9.30 yds x 27.56" = 64 sq. ft.)
Pattern repeat	Free match 0 cm (0.00")
Adhesive	Arte Clearpro or a good quality dispersion adhesive
How to paste	Paste the wall
Light resistance	Good lightfastness
How to remove	Strippable
Fire retardant EU	B-s1, d0
Fire retardant US	Class A
Maintenance	Extra-washable
IMO Certified	 0493/22



Colourways (10)



30000



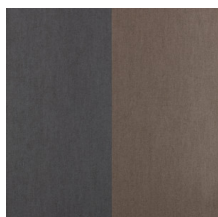
30001



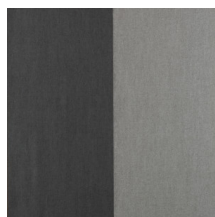
30002



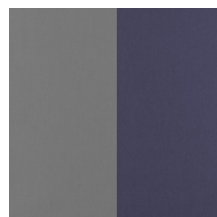
30003



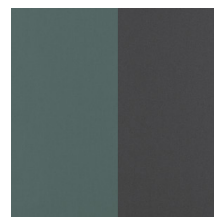
30004



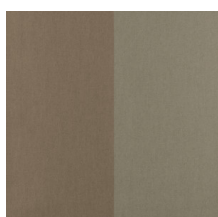
30005



30006



30007



30008



30009

More info? [Click here](#)

Order samples, calculate quantities, view instructional videos, download technical information and more:
www.arte-international.com



ARTE®

wallcoverings for the ultimate in refinement